

Description

The Exosome Essentials Antibody Kit provides a cost-effective tool for identifying and studying exosomal markers. Perfect for researchers starting a new project, screening multiple prospective targets or those who simply require less volume.

Product Information

The Exosome Expanded Antibody Kit contains antibodies against 10 key proteins for studying exosomes (including anti-GM-130 as a negative control).

Antigen	Catalog No.	Host, clonality	Tested Reactivity	Applications	Volume
CD63	25682-1-AP	Rabbit Polyclonal	H	WB, IP, IF, IHC	20 uL
Alix	12422-1-AP	Rabbit Polyclonal	H, M, R	WB, IP, IF, IHC	20 uL
TSG101	67381-1-Ig	Mouse monoclonal	H, M, R	WB, IF, IHC	20 uL
HSP70	10995-1-AP	Rabbit Polyclonal	H, M, R	WB, IP, IF, IHC	20 uL
GOLGA2/GM130	66662-1-Ig	Mouse monoclonal	H, R	WB, IF	20 uL
Annexin V	66245-1-Ig	Mouse monoclonal	H, M	WB, IF, IHC	20 uL
EpCAM	66316-1-Ig	Mouse monoclonal	H	WB, IF, IHC	20 uL
HSP90	60318-1-Ig	Mouse monoclonal	H, M, R, Pg	WB, IP, IF, IHC	20 uL
CD9	84142-1-RR	Rabbit monoclonal	H	WB, IF, IHC	20 uL
CD81	66866-1-Ig	Mouse monoclonal	H	WB, IF, IHC	20 uL

Also see our 'Exosome Essentials Antibody Kit ' on the following page

<https://www.ptglab.com/products/Exosome-Essentials-Antibody-Kit-PK30023.htm>

Package

10× 20 uL

Storage

Store at -20°C. Stable for one year from the date of receipt.

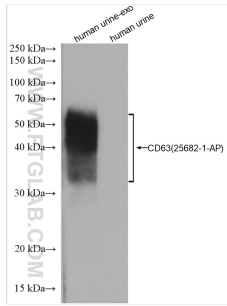
Background Information

Exosomes are small, membrane-bound vesicles that are secreted by various types of cells in normal and pathophysiological conditions, including cancers, neurodegenerative disorders, and cardiovascular diseases. They are involved in intercellular communication and are responsible for the transfer of bioactive molecules, such as nucleic acids, proteins, and lipids. In addition to analyzing cargo from isolated exosomes, scientists have also been harnessing the potential of exosomes for drug delivery and regenerative medicine.

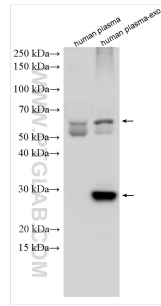
Standard Protocols

Click [here](#) to view our standard protocols for various applications including WB, IP, IHC, IF, FC, and ELISA.

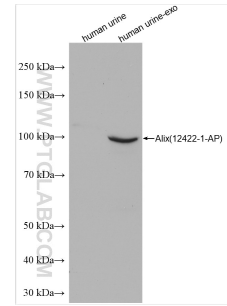
Validation Data



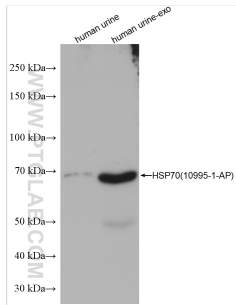
Human urine and human urine-derived exosomes (human urine-exo) were subjected to SDS PAGE followed by western blot with 25682-1-AP (CD63 antibody) at dilution of 1:1000 incubated at room temperature for 1.5 hours.



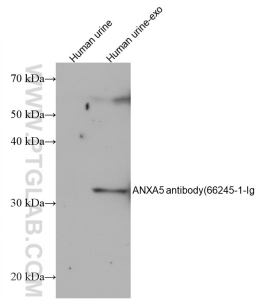
Human plasma and human plasma-derived exosomes (human plasma-exo) were subjected to SDS PAGE followed by western blot with 25682-1-AP (CD63 antibody) at dilution of 1:1000 incubated at room temperature for 1.5 hours.



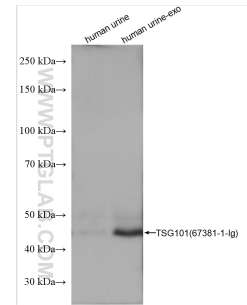
Human urine and human urine-derived exosomes (human urine-exo) were subjected to SDS PAGE followed by western blot with 12422-1-AP (Alix antibody) at dilution of 1:10000 incubated at room temperature for 1.5 hours.



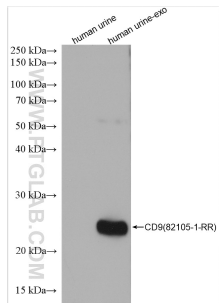
Human urine and human urine-derived exosomes (human urine-exo) were subjected to SDS PAGE followed by western blot with 10995-1-AP (HSP70 antibody) at dilution of 1:10000 incubated at room temperature for 1.5 hours.



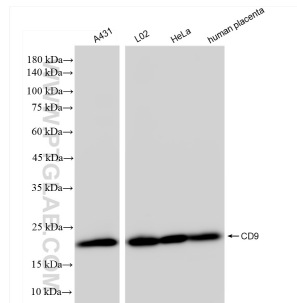
Human urine exosomes tissue were subjected to SDS PAGE followed by western blot with 25682-1-AP (CD63 antibody) at dilution of 1:1000 incubated at room temperature for 1.5 hours.



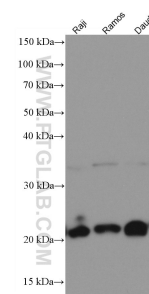
Human urine and human urine-derived exosomes (human urine-exo) were subjected to SDS PAGE followed by western blot with 67381-1-Ig (TSG101 antibody) at dilution of 1:5000 incubated at room temperature for 1.5 hours.



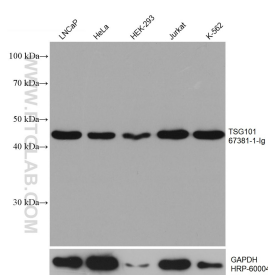
Human urine and human urine-derived exosomes (human urine-exo) were subjected to SDS PAGE followed by western blot with 82105-1-RR (CD9 antibody) at dilution of 1:5000 incubated at room temperature for 1.5 hours.



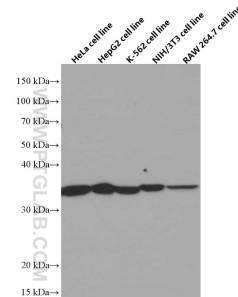
Various lysates were subjected to SDS PAGE followed by western blot with 84142-1-RR (CD9 antibody) at dilution of 1:10000 incubated at room temperature for 1.5 hours.



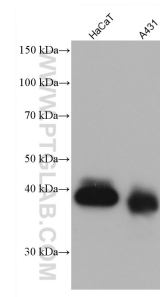
Various lysates were subjected to SDS PAGE followed by western blot with 66866-1-Ig (CD81 antibody) at dilution of 1:3000 incubated at room temperature for 1.5 hours.



Various lysates were subjected to SDS PAGE followed by western blot with 67381-1-Ig (TSG101 antibody) at dilution of 1:20000 incubated at room temperature for 1.5 hours. The membrane was stripped and reblotted with HRP-conjugated GAPDH Monoclonal antibody (HRP-60004) as loading



Various cells were subjected to SDS PAGE followed by western blot with 66245-1-Ig (Annexin V antibody) at dilution of 1:13000 incubated at room temperature for 1.5 hours.



Various lysates were subjected to SDS PAGE followed by western blot with 66316-1-Ig (EPCAM antibody) at dilution of 1:5000 incubated at room temperature for 1.5 hours.

For technical support and original validation data for this product please contact

T: 1 (888) 4PTGLAB(1-888-478-4522)(toll free in USA), or 1(312) 455-8498(outside USA)

E: proteintech@ptglab.com
W: ptglab.com

This product is exclusively available under Proteintech Group brand and is not available to purchase from any other manufacturer.