

For Research Use Only

Multi-rAb™ IL-1 beta Multi-Recombinant antibody

Catalog Number: **RMX00024**



Basic Information

Catalog Number: RMX00024	GenBank Accession Number: BC008678	Purification Method: N/A
Size: 100ul , Concentration: 1000 µg/ml by Nanodrop;	GeneID (NCBI): 3553	Recommended Dilutions: WB 1:5000-1:50000
Source: Rabbit	ENSEMBL Gene ID: ENSG00000125538	
Isotype: IgG	UNIPROT ID: P01584	
	Full Name: interleukin 1, beta	
	Calculated MW: 269 aa, 31 kDa	
	Observed MW: 30-35 kDa	

Applications

Tested Applications: WB, ELISA	Positive Controls: WB : LPS and Brefeldin A treated THP-1 cells,
Species Specificity: human	

Background Information

Interleukin-1 is a pro-inflammatory cytokine with multiple biological effects. The IL-1 gene family encodes three proteins: IL-1 α , IL-1 β and their naturally occurring inhibitor IL-1RN. IL-1 Beta(IL-1 β), mainly produced by blood monocytes and tissue macrophages, has been implicated in mediating both acute and chronic inflammation. IL-1 β is known to be involved in a variety of cellular activities, including cell proliferation, differentiation and apoptosis. IL-1 β is emerging as a key mediator of carcinogenesis that characterizes host-environment interactions. Human IL-1 β is synthesized as a 31 kDa precursor. To gain activity, the precursor must be cleaved by caspase-1 between Asp116 and Ala117 to yield a 17 kDa mature form.

Storage

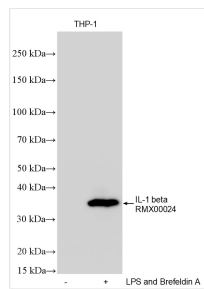
Storage:
Store at -20°C. Stable for one year after shipment.
Storage Buffer:
PBS with 0.02% sodium azide and 50% glycerol.
Aliquoting is unnecessary for -20°C storage

*** 20ul sizes contain 0.1% BSA

For technical support and original validation data for this product please contact:
T: 1 (888) 4PTGLAB (1-888-478-4522) (toll free in USA), or 1(312) 455-8498 (outside USA)
E: proteintech@ptglab.com
W: ptglab.com

This product is exclusively available under Proteintech Group brand and is not available to purchase from any other manufacturer.

Selected Validation Data



Various lysates were subjected to SDS PAGE followed by western blot with RMX00024 (IL-1 beta antibody) at dilution of 1:10000 incubated at room temperature for 1.5 hours.