

For Research Use Only

Human TBNK Basics Panel

Catalog Number: PK30012



www.ptglab.com

Product Information

The immune system is comprised of multiple cell types that each play an important role in the immune response to foreign antigens.

This panel is designed for the separation of lymphocytes into T Lymphocytes (CD3 positive), B Lymphocytes (CD19 positive), and NK Cells (CD3-/CD19-). T Lymphocytes can further be separated into Helper T Cells and Cytotoxic T Cells. The PE channel is left open.

Panel Components

Fluorochrome (ex/em)	Catalog No	Target	Clone	Isotype	Description
Cardinal Red (592 nm/611 nm)	CR-65151	CD3	UCHT1	Mouse IgG1k	T cell marker
Atlantic Blue (404 nm/458 nm)	AB-65197	CD19	4G7	Mouse IgG1k	B cell marker
CoraLite Plus 488 (493 nm/522 nm)	CL488-65134	CD4	OKT4	Mouse IgG2bk	Helper T cell marker
CoraLite Plus 647 (654 nm/674 nm)	CL647-65135	CD8a	OKT8	Moues IgG2ak	Cytotoxic T cell marker
CoraLite Plus 750 (755 nm/780 nm)	CL750-65264	CD56	B-A19	Mouse IgG1	NK cell marker

Package

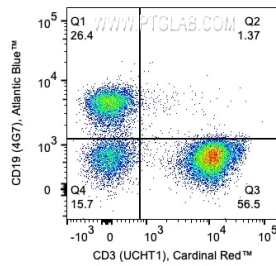
5x100 tests

Storage

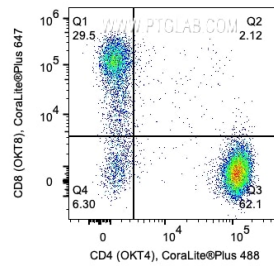
Storage Buffer: PBS with 0.09% sodium azide and 0.5% BSA.

Storage Conditions: Store at 2-8°C. Avoid exposure to light. Stable for one year after shipment.

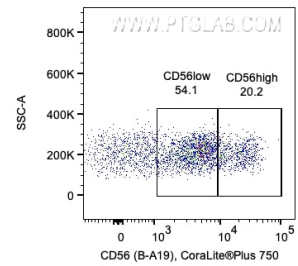
Validation Data



1x10⁶ Human PBMCs were stained with PK30012 Human TBNK Basics Panel. CD3 and CD19 expression on lymphocytes is shown. Cells were not fixed.



1x10⁶ Human PBMCs were stained with PK30012 Human TBNK Basics Panel. CD4 and CD8 expression on CD3+/CD19- lymphocytes is shown. Cells were not fixed.



1x10⁶ Human PBMCs were stained with PK30012 Human TBNK Basics Panel. CD56 expression on CD3-/CD19- lymphocytes is shown. Cells were not fixed.

For technical support and original validation data for this product please contact

T: 1 (888) 4PTGLAB(1-888-478-4522)(toll free in USA), or
1(312) 455-8498(outside USA)

E: proteintech@ptglab.com
W: ptglab.com

This product is exclusively available under Proteintech Group brand and is not available to purchase from any other manufacturer.