

For Research Use Only

CoraLite®594-Phalloidin (red)

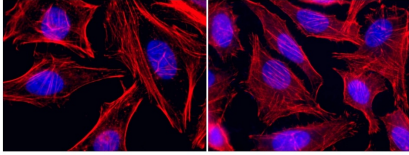
Catalog Number: PF00003



www.ptglab.com

Description	Phalloidin is a toxin isolated from mushrooms that binds F-Actin in the cytoskeleton. This product is conjugated to our fluorescent CoraLite(R) dye to stain F-actin for labeling, identifying and quantifying actin filaments in immunostaining studies. Compared to many fluorescent dyes, CoraLite(R) dyes have advantages in brightness, light stability and water solubility. Excitation/Emission maxima wavelengths are 593 nm/614 nm
Conjugated	CoraLite®594-Phalloidin(red). Ex/Em: 593/614 nm
Package	300T
Storage	Store at -20°C. Avoid exposure to light. Stable for 2 years after shipment.
Stock preparation	Prepare a 200T/mL stock solution by dissolving lyophilized phalloidin (300T) in 1.5 mL sterile water and protect solution from light.
Cautions	This product is in the form of freeze-dried powder. Please centrifuge it immediately before use and dissolve it in a suitable solvent before use. Phalloidin is highly toxic, please take protective measures .

Validation Data



Cell: HeLa Red: CL594-Phalloidin Blue: DAPI

Immunofluorescent analysis of (4% PFA) fixed HeLa cells using the CoraLite®594-conjugated Phalloidin antibody, CL594-Phalloidin, at dilution of 1:400. The nuclei were counterstained with DAPI.

For technical support and original validation data for this product please contact

T: 1 (888) 4PTGLAB(1-888-478-4522)(toll free in USA), or
1(312) 455-8498(outside USA)

E: proteintech@ptglab.com
W: ptglab.com

This product is exclusively available under Proteintech Group brand and is not available to purchase from any other manufacturer.