

For Research Use Only

FcZero-rAb™ PE Anti-Human SLAM/CD150 Rabbit Recombinant Antibody

Catalog Number: PE-FcA98220



Basic Information

Catalog Number: PE-FcA98220	GenBank Accession Number: NM_003037.5	Purification Method: Protein A purification
Size: 100tests , 5 ul/test	GeneID (NCBI): 6504	CloneNo.: 241800B12
Source: Rabbit	Full Name: signaling lymphocytic activation molecule family member 1	Excitation/Emission maxima wavelengths: 496 nm, 565 nm / 578 nm
Isotype: IgG	Calculated MW: 37kDa	
Immunogen Catalog Number: EG1702		

Applications

Tested Applications: FC	Positive Controls: FC : human PBMCs,
Species Specificity: human	

Background Information

Signaling lymphocytic activation molecule (SLAM, also known as SLAMF1 or CD150) is a 70-95 kDa transmembrane glycoprotein that belongs to the immunoglobulin gene superfamily. SLAM is constitutively expressed on peripheral blood memory T-cells, T-cell clones, immature thymocytes and a proportion of B-cells, and is rapidly induced on naive T-cells after activation. SLAM is involved in T cell stimulation and cytokine production, and may play an important role in the regulation of immune responses to pathogens.

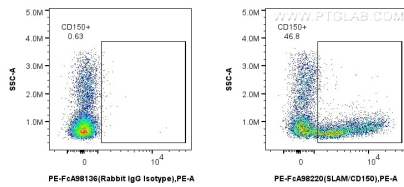
Storage

Storage:
Store at 2-8°C. Avoid exposure to light. Stable for one year after shipment.
Storage Buffer:
PBS with 0.09% sodium azide and 0.5% BSA, pH7.3

For technical support and original validation data for this product please contact:
T: 1 (888) 4PTGLAB (1-888-478-4522) (toll free in USA), or 1(312) 455-8498 (outside USA)
E: proteintech@ptglab.com
W: ptglab.com

This product is exclusively available under Proteintech Group brand and is not available to purchase from any other manufacturer.

Selected Validation Data



1x10⁶ human PBMCs were surface stained with 5 ul PE Anti-Human SLAM/CD150 Rabbit RecAb (PE-FcA98220, Clone: 241800B12) or PE Rabbit IgG Isotype Control RecAb (PE-FcA98136, Clone: 240953C9). Cells were not fixed.