

For Research Use Only

PE Rabbit IgG Isotype Control Recombinant Antibody

Catalog Number: PE-98136



Basic Information

Catalog Number:

PE-98136

Size:

100ug , 200 µg/ml

Source:

Rabbit

Isotype:

IgG

GenBank Accession Number:

GeneID (NCBI):

Full Name:

Purification Method:

Protein A purification

CloneNo.:

240953C9

Excitation/Emission maxima wavelengths:

496 nm, 565 nm / 578 nm

Applications

Tested Applications:

FC

Species Specificity:

n/a

Background Information

This product is an isotype control antibody, which is used to estimate the non-specific binding of target primary antibodies due to Fc receptor binding or other protein-protein interactions. An isotype control antibody should have the same immunoglobulin type and be used at the same concentration as the test antibody.

Storage

Storage:

Store at 2-8°C. Avoid exposure to light. Stable for one year after shipment.

Storage Buffer:

PBS with 0.1% sodium azide and 0.5% BSA.

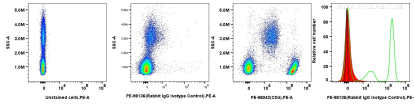
For technical support and original validation data for this product please contact:

T: 1 (888) 4PTGLAB (1-888-478-4522) (toll free in USA), or 1(312) 455-8498 (outside USA)

E: proteintech@ptglab.com
W: ptglab.com

This product is exclusively available under Proteintech Group brand and is not available to purchase from any other manufacturer.

Selected Validation Data



1x10⁶ human PBMCs were surface stained with 0.2 ug PE Rabbit IgG Isotype Control Recombinant Antibody (PE-98136, Clone:240953C9) (red), or 0.2 ug PE Anti-Human CD4 Rabbit Recombinant Antibody (PE-98042, Clone: 240427E12) (green), or unstained (blue). Cells were incubated with FC Receptor Block prior to staining. Cells were not fixed.