

For Research Use Only

# PE Anti-Mouse VEGFR2/CD309 Rabbit Recombinant Antibody

Catalog Number: PE-98027-2



## Basic Information

Catalog Number:

PE-98027-2

Size:

100ug, 200 µg/ml

Source:

Rabbit

Isotype:

IgG

GenBank Accession Number:

NM\_010612.2

GeneID (NCBI):

16542

UNIPROT ID:

P35918-1

Full Name:

kinase insert domain protein receptor

Calculated MW:

150KD

Purification Method:

Protein A purification

CloneNo.:

240214D7

Excitation/Emission maxima wavelengths:

496 nm, 565 nm / 578 nm

## Applications

Tested Applications:

FC

Species Specificity:

mouse

## Background Information

VEGFR2, also named as CD309, KDR and FLK1, is a receptor for VEGF or VEGFC. VEGFR2 which belongs to the protein kinase superfamily, has a tyrosine-protein kinase activity. The VEGF-kinase ligand/receptor signaling system plays a key role in vascular development and regulation of vascular permeability. In case of HIV-1 infection, the interaction with extracellular viral Tat protein seems to enhance angiogenesis in Kaposi's sarcoma lesions. VEGFR2 functions as the main mediator of VEGF-induced endothelial proliferation, survival, migration, tubular morphogenesis and sprouting. Mutations of this gene are implicated in infantile capillary hemangiomas.

## Storage

Storage:

Store at 2-8°C. Avoid exposure to light. Stable for one year after shipment.

Storage Buffer:

PBS with 0.09% sodium azide and 0.5% BSA.

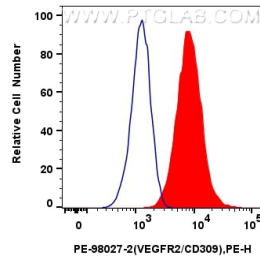
For technical support and original validation data for this product please contact:

T: 1 (888) 4PTGLAB (1-888-478-4522) (toll free in USA), or 1(312) 455-8498 (outside USA)

E: [proteintech@ptglab.com](mailto:proteintech@ptglab.com)  
W: [ptglab.com](http://ptglab.com)

This product is exclusively available under Proteintech Group brand and is not available to purchase from any other manufacturer.

## Selected Validation Data



$1 \times 10^6$  bEnd.3 cells were surface stained with 0.1  $\mu$ g PE Anti-Mouse VEGFR2/CD309 Rabbit Recombinant Antibody (PE-98027-2, Clone: 240214D7)(red), or 0.1  $\mu$ g PE Rabbit IgG Isotype Control Recombinant Antibody (PE-98136, Clone: 240953C9) (blue). Cells were not fixed.