

For Research Use Only

# PE-conjugated NAT10 Monoclonal antibody



Catalog Number: PE-67465

Featured Product

## Basic Information

**Catalog Number:**

PE-67465

**Size:**

100ul , Concentration: 200 µg/ml by Nanodrop;

**Source:**

Mouse

**Isotype:**

IgG2a

**Immunogen Catalog Number:**

AG4355

**GenBank Accession Number:**

BC035558

**GeneID (NCBI):**

55226

**UNIPROT ID:**

Q9H0A0

**Full Name:**

N-acetyltransferase 10 (GCN5-related)

**Calculated MW:**

1025 aa, 116 kDa

**Observed MW:**

116 kDa

**Purification Method:**

Protein A purification

**CloneNo.:**

3E3D8

**Excitation/Emission maxima wavelengths:**

496 nm, 565 nm / 578 nm

## Applications

**Tested Applications:**

FC (Intra)

**Species Specificity:**

human, mouse, rat

## Background Information

NAT10 (N-acetyltransferase 10) is a nucleolar protein that is involved in regulation of telomerase activity, DNA damage response, and cytokinesis. It also plays a role in maintaining nuclear shape. Inhibition of NAT10 has been reported to rescue the misshapen nuclei in laminopathic cells via microtubule reorganization.

## Storage

**Storage:**

Store at -20°C. Avoid exposure to light.

**Storage Buffer:**

PBS with 0.1% sodium azide and 0.5% BSA.

Aliquoting is unnecessary for -20°C storage

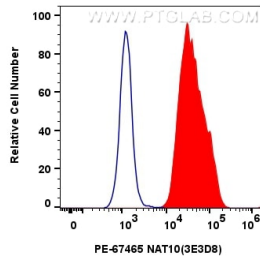
For technical support and original validation data for this product please contact:

T: 1 (888) 4PTGLAB (1-888-478-4522) (toll free in USA), or 1(312) 455-8498 (outside USA)

E: [proteintech@ptglab.com](mailto:proteintech@ptglab.com)  
W: [ptglab.com](http://ptglab.com)

This product is exclusively available under Proteintech Group brand and is not available to purchase from any other manufacturer.

## Selected Validation Data



1x10<sup>6</sup> NIH/3T3 cells were intracellularly stained with 0.4 ug PE Nat10 Monoclonal Antibody (PE-67465, Clone:3E3D8)(red), or 0.4 ug PE Mouse IgG2a Isotype Control (C1.18.4) (PE-65208, Clone: C1.18.4) (blue). Cells were fixed and permeabilized with Transcription Factor Staining Buffer Kit (PF00011).