

For Research Use Only

# PE Anti-Human MICA/MICB (6D4) Mouse IgG2a Recombinant Antibody

Catalog Number: PE-65589



## Basic Information

Catalog Number:

PE-65589

Size:

100 tests, 5 ul/test

Source:

Mouse

Isotype:

IgG2a

GenBank Accession Number:

BC016929

GeneID (NCBI):

100507436

Full Name:

MHC class I polypeptide-related  
sequence A

Calculated MW:

383 aa, 43 kDa

Purification Method:

Protein A purification

CloneNo.:

6D4

Excitation/Emission maxima  
wavelengths:

496 nm, 565 nm / 578 nm

## Applications

Tested Applications:

FC

Species Specificity:

human

## Background Information

Human MHC class I chain-related genes located within the HLA class I region of chromosome 6 encode MHC class I chain-related A and B (MICA and MICB) (PMID: 11429322). MICA and MICB are stress-inducible surface molecules that are not associated with  $\beta$ 2-microglobulin and do not present peptides (PMID: 9497295). They are expressed in intestinal epithelium and many epithelial tumors (PMID: 10359807). MICA and MICB are ligands for NKG2D which is an activating receptor that is expressed on most natural killer (NK) cells, CD8  $\alpha\beta$  T cells, and  $\gamma\delta$  T cells (PMID: 10426993; 11491531). The monoclonal antibody 6D4 recognizes MICA and MICB.

## Storage

Storage:

Store at 2-8°C. Avoid exposure to light. Stable for one year after shipment.

Storage Buffer:

PBS with 50% Glycerol, 0.05% Proclin300, 0.5% BSA, pH 7.3.

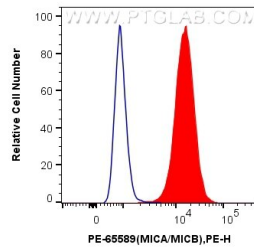
For technical support and original validation data for this product please contact:

T: 1 (888) 4PTGLAB (1-888-478-4522) (toll free  
in USA), or 1(312) 455-8498 (outside USA)

E: [proteintech@ptglab.com](mailto:proteintech@ptglab.com)  
W: [ptglab.com](http://ptglab.com)

This product is exclusively available under Proteintech Group brand and is not available to purchase from any other manufacturer.

## Selected Validation Data



$1 \times 10^6$  HeLa cells were surface stained with 5  $\mu$ l PE Anti-Human MICA/MICB (6D4) Mouse IgG2a Recombinant Antibody (PE-65589, Clone: 6D4) (red), or 5  $\mu$ l PE Mouse IgG2a Isotype Control (C1.18.4) (PE-65208, Clone: C1.18.4) (blue). Cells were not fixed.