

For Research Use Only

PE Anti-Human NCAM1/CD56 (B-A19)

Catalog Number: PE-65264



Basic Information

Catalog Number: PE-65264	GenBank Accession Number: BC014205	Purification Method: Unknow
Size: 100tests , 5 µl/test	GeneID (NCBI): 4684	CloneNo.: B-A19
Source: Mouse	ENSEMBL Gene ID: ENSG00000149294	Excitation/Emission maxima wavelengths: 496 nm, 565 nm / 578 nm
Isotype: IgG1	Full Name: neural cell adhesion molecule 1	

Applications

Tested Applications:
FC

Species Specificity:
human

Background Information

Neural cell adhesion molecule 1 (NCAM1, also known as CD56) is a cell adhesion glycoprotein of the immunoglobulin (Ig) superfamily. It is a multifunction protein involved in synaptic plasticity, neurodevelopment, and neurogenesis. NCAM1 is expressed on human neurons, glial cells, skeletal muscle cells, NK cells and a subset of T cells, and the expression is observed in a wide variety of human tumors, including myeloma, myeloid leukemia, neuroendocrine tumors, Wilms' tumor, neuroblastoma, and NK/T cell lymphomas.

Storage

Storage:
Store at 2-8°C. Avoid exposure to light. Stable for one year after shipment.

Storage Buffer:
PBS with 0.09% sodium azide and 0.5% BSA.

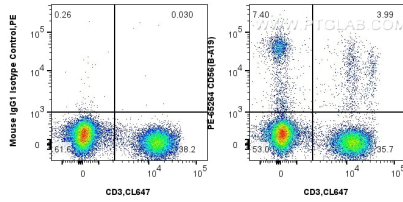
For technical support and original validation data for this product please contact:

T: 1 (888) 4PTGLAB (1-888-478-4522) (toll free in USA), or 1(312) 455-8498 (outside USA)

E: proteintech@ptglab.com
W: ptglab.com

This product is exclusively available under Proteintech Group brand and is not available to purchase from any other manufacturer.

Selected Validation Data



1x10⁶ human peripheral blood leukocytes were surface stained with 5 ul PE Anti-Human CD56 (B-A19) (PE-65264, Clone: B-A19) or PE Mouse IgG1 Isotype Control (MOPC-21) (PE-65124, Clone: MOPC-21). Cells were co-stained with CoraLite® Plus 647 Anti-Human CD3 (UCHT1) (CL647-65151, Clone: UCHT1). Cells were not fixed. Lymphocytes were gated.