

Mouse Activated T Cell Panel

General Information

Catalog Number: PK30013

Stability and Storage: 1 year from receipt at 2 to 8°C

Formulation: See individual product datasheets for details.

Applications: FC

Reactivity: Mouse

Size: 5x100ug

Panel Components

Fluorochrome (ex/em)	Catalog No.	Target	Clone	Isotype	Description
CoraLite Plus 647 (654 nm/674 nm)	CL647-65060	CD3ε	145-2C11	Armenian Hamster IgG	T cell marker
CoraLite Plus 405 (399 nm/422 nm)	CL405-65104	CD4	GK1.5	Rat IgG2b α	T helper cell marker
CoraLite 594 (588 nm/604 nm)	CL594-65069	CD8a	53-6.7	Rat IgG2a α	Cytotoxic T cell marker
CoraLite Plus 488 (493 nm/522 nm)	CL488-65105	CD69	H1.2F3	Armenian Hamster IgG	Marker of activation
CoraLite Plus 750 (755 nm/780 nm)	CL750-65137	CD25	PC61.5	Rat IgG1 λ	Marker of activation

Product Description

T lymphocytes are immune cells that respond to foreign antigens by secreting cytokines (CD8⁺ Cytotoxic T cells) and coordinating the immune response (CD4⁺ Helper T cells).

This panel is designed for the identification of CD3⁺ T lymphocytes into CD4⁺ T Lymphocyte and CD8⁺T Lymphocyte subpopulations and the evaluation of these two populations for activation with CD69 and CD25. The PE channel is left open.

Proteintech Group, Inc.

(HQ in North America)

5500 Pearl Street, Ste 400
Rosemont, IL 60018, USA

P +1 (888) 478-4522 (toll free in USA)

F +1 (773) 598-4321

+1 (847) 928-2189

E proteintech@ptglab.com

Proteintech Europe

P +44 161 839 3007

F +44 161 241 3103

E europe@ptglab.com

Proteintech China

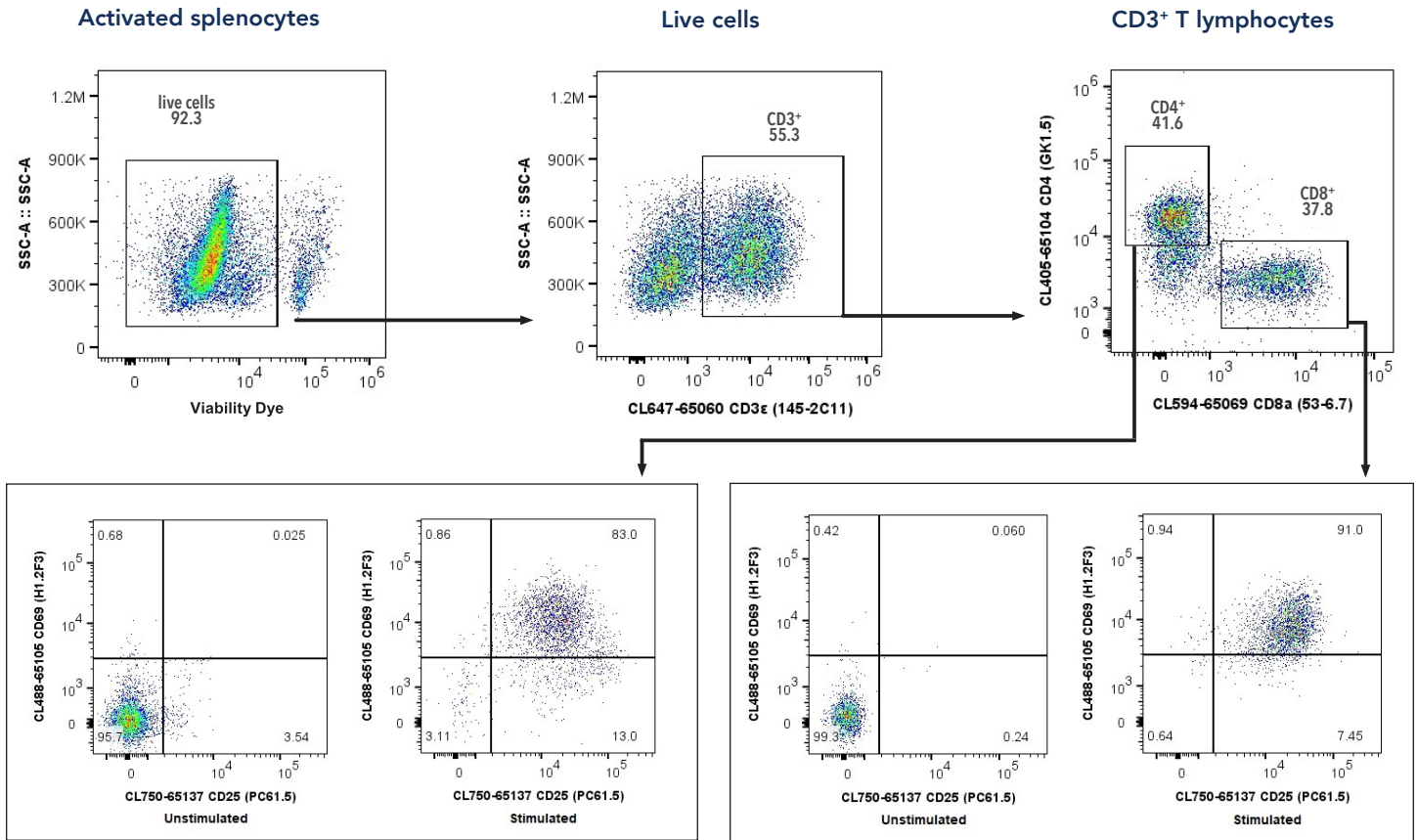
E proteintech-CN@ptglab.com

Proteintech Singapore

P +65 9785 0861

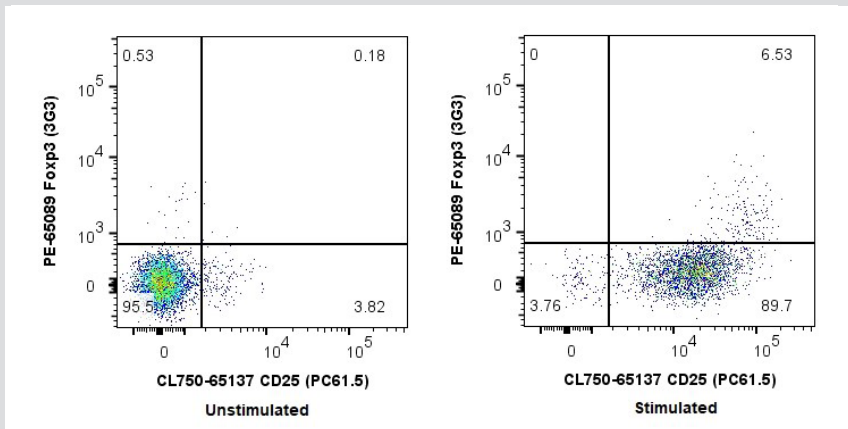
E singapore@ptglab.com

Validation Data *Sample: ConA stimulated Mouse Splenocytes*



▲ ConA stimulated (right) and unstimulated (left) mouse splenocytes were evaluated for CD25 and CD69 expression. CD4⁺ T lymphocytes were gated.

▲ ConA stimulated (right) and unstimulated (left) mouse splenocytes were evaluated for CD25 and CD69 expression. CD8⁺ T lymphocytes were gated.



Validation Data with Drop-in Target

PE Anti-Mouse FcγR3 (PE-65089) was used in addition to the Mouse Activated T Cell Panel. ConA stimulated (right) and unstimulated (left) mouse splenocytes were evaluated for CD25 and FcγR3 expression. CD3⁺/CD4⁺ T lymphocytes were gated.

Find more
Flow Cytometry
Products



Download the
Flow Cytometry
Guide

