

For Research Use Only

PARK7,DJ-1 Hybrid Matched Antibody Pair, PBS Only



Catalog Number:MP80004-1

Capture Antibody Information

Catalog Number:
82913-1-PBS
Host:
Rabbit
Isotype:
IgG
Purification Method:
Protein A purification

Clone ID:
230124E12
Reactivity:
human
Immunogen Catalog Number:
Ag2287

Conjugate:
Unconjugated
Full name:
Parkinson disease (autosomal recessive, early onset) 7
Gene ID:
11315

Detection Antibody Information

Catalog Number:
68802-1-PBS
Host:
Mouse
Isotype:
IgG2a
Purification Method:
Protein A purification

Clone ID:
1E5C3
Reactivity:
human
GenBank:
BC008188
Immunogen Catalog Number:
Ag2287

Conjugate:
Unconjugated
Full name:
Parkinson disease (autosomal recessive, early onset) 7
Gene ID:
11315

Applications

Tested Applications:
Sandwich ELISA

Range:
0.39-25 ng/mL (Sandwich ELISA)

Recommended Dilutions:
It is recommended that this reagent should be titrated in each testing system to obtain optimal results.

Product Information

MP80004-1 targets PARK7,DJ-1 in immunoassays as a matched antibody pair. Validated in Sandwich ELISA.

Capture antibody: PARK7/DJ-1 Recombinant antibody, PBS Only (Capture) 82913-1-PBS (230124E12). 100 µg. Concentration 1 mg/ml.

Detection antibody: PARK7/DJ-1 Monoclonal antibody, PBS Only (Detector) 68802-1-PBS (1E5C3). 100 µg. Concentration 1 mg/ml.

Unconjugated rabbit recombinant antibody and mouse monoclonal antibody pair in PBS only storage buffer at a concentration of 1 mg/mL, ready for conjugation. Created using Proteintech's proprietary in-house recombinant technology. Mouse monoclonal antibody and Rabbit Recombinant production enables unrivalled batch-to-batch consistency, easy scale-up, and future security of supply.

Matched antibody pairs are designed for use in a variety of assays and platforms that require matched antibody pairs.

Antibody use should be optimized for each application and assay.

Storage

Storage:
Store at -80°C.
Storage buffer:
PBS only

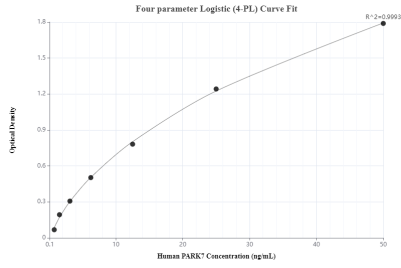
For technical support and original validation data for this product please contact:

T: 1 (888) 4PTGLAB (1-888-478-4522) (toll free in USA), or 1(312) 455-8498 (outside USA)

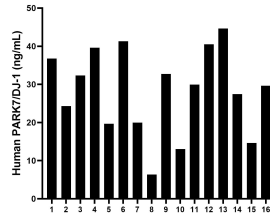
E: proteintech@ptglab.com
W: ptglab.com

This product is exclusively available under Proteintech Group brand and is not available to purchase from any other manufacturer.

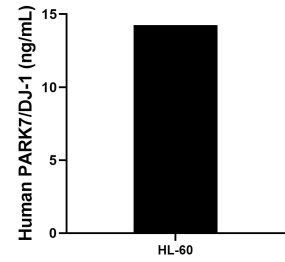
Selected Validation Data



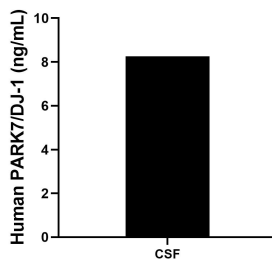
Sandwich ELISA standard curve of MP80004-1, Human PARK7/DJ-1 Monoclonal Matched Antibody Pair - PBS only. 82913-1-PBS was coated to a plate as the capture antibody and incubated with serial dilutions of standard Ag2287. 68802-1-PBS was HRP conjugated as the detection antibody. Range: 0.39-25 ng/mL



Serum of sixteen individual healthy human donors were measured. The human PARK7/DJ-1 concentration of detected samples was determined to be 28.3 ng/mL with a range of 6.3 - 44.6 ng/mL



The mean human PARK7/DJ-1 concentration was determined to be 14.25 ng/mL in HL-60 cell extract based on a 4.3 mg/mL extract load.



The human PARK7/DJ-1 concentration of Human cerebrospinal fluid (CSF) samples were determined to be 8.3 ng/mL