

# ADA Monoclonal Matched Antibody Pair, PBS Only

Catalog Number: **MP51321-1**

## Capture Antibody Information

<b>Catalog Number:</b> 67870-2-PBS	<b>Clone ID:</b> 1F1H7	<b>Conjugate:</b> Unconjugated
<b>Host:</b> Mouse	<b>Reactivity:</b> human	<b>Full name:</b> adenosine deaminase
<b>Isotype:</b> IgG1	<b>Immunogen Catalog Number:</b> Ag31326	<b>Gene ID:</b> 100
<b>Purification Method:</b> Protein G purification		

## Detection Antibody Information

<b>Catalog Number:</b> 67870-3-PBS	<b>Clone ID:</b> 2C2C4	<b>Conjugate:</b> Unconjugated
<b>Host:</b> Mouse	<b>Reactivity:</b> human	<b>Full name:</b> adenosine deaminase
<b>Isotype:</b> IgG1	<b>GenBank:</b> BC040226	<b>Gene ID:</b> 100
<b>Purification Method:</b> Protein G Magarose purification	<b>Immunogen Catalog Number:</b> Ag31326	

## Applications

<b>Tested Applications:</b> Cytometric bead array	<b>Range:</b> 12.5-200 ng/mL (Cytometric Bead Array)	<b>Recommended Dilutions:</b> It is recommended that this reagent should be titrated in each testing system to obtain optimal results.
--	---	---

## Product Information

MP51321-1 targets ADA in immunoassays as a matched antibody pair. Validated in Cytometric bead array.

Capture antibody: ADA Monoclonal antibody, PBS Only (Capture) 67870-2-PBS (1F1H7). 100 µg. Concentration 1 mg/mL.

Detection antibody: ADA Monoclonal antibody, PBS Only (Detector) 67870-3-PBS (2C2C4). 100 µg. Concentration 1 mg/mL.

Unconjugated mouse monoclonal antibody pair in PBS only storage buffer at a concentration of 1 mg/mL, ready for conjugation.

Matched antibody pairs are designed for use in a variety of assays and platforms that require matched antibody pairs.

Antibody use should be optimized for each application and assay.

## Storage

**Storage:**  
Store at -80°C.  
**Storage buffer:**  
PBS only

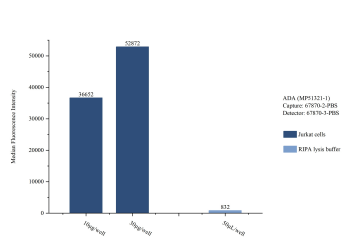
For technical support and original validation data for this product please contact:

T: 1 (888) 4PTGLAB (1-888-478-4522) (toll free in USA), or 1(312) 455-8498 (outside USA)

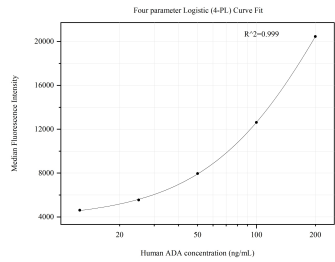
E: [proteintech@ptglab.com](mailto:proteintech@ptglab.com)  
W: [ptglab.com](http://ptglab.com)

**This product is exclusively available under Proteintech Group brand and is not available to purchase from any other manufacturer.**

# Selected Validation Data



Sample test of MP51321-1, ADA Monoclonal Matched Antibody Pair, PBS Only. Capture antibody: 67870-2-PBS. Detection antibody: 67870-3-PBS.



Cytometric bead array standard curve of MP51321-1, ADA Monoclonal Matched Antibody Pair, PBS Only. Capture antibody: 67870-2-PBS. Detection antibody: 67870-3-PBS. Standard:Ag31326. Range: 12.5-200 ng/mL.