

For Research Use Only

CCL22/MDC Monoclonal Matched Antibody Pair, PBS Only



Catalog Number:MP51202-1

Capture Antibody Information

Catalog Number:
60754-1-PBS

Host:
Mouse

Isotype:
IgG1

Purification Method:
Protein G Magarose purification

Clone ID:
1G5E10

Reactivity:
human

Immunogen Catalog Number:
Ag4275

Conjugate:
Unconjugated

Full name:
chemokine (C-C motif) ligand 22

Gene ID:
6367

Detection Antibody Information

Catalog Number:
60754-2-PBS

Host:
Mouse

Isotype:
IgG1

Purification Method:
Protein G Magarose purification

Clone ID:
3E1F3

Reactivity:
human

GenBank:
BC027952

Immunogen Catalog Number:
Ag4275

Conjugate:
Unconjugated

Full name:
chemokine (C-C motif) ligand 22

Gene ID:
6367

Applications

Tested Applications:
Cytometric bead array

Range:
0.391-25 ng/mL (Cytometric Bead Array)

Recommended Dilutions:
It is recommended that this reagent should be titrated in each testing system to obtain optimal results.

Product Information

MP51202-1 targets CCL22/MDC in immunoassays as a matched antibody pair. Validated in Cytometric bead array.

Capture antibody: CCL22/MDC Monoclonal antibody, PBS Only (Capture) 60754-1-PBS (1G5E10). 100 µg. Concentration 1 mg/mL.

Detection antibody: CCL22/MDC Monoclonal antibody, PBS Only (Detector) 60754-2-PBS (3E1F3). 100 µg. Concentration 1 mg/mL.

Unconjugated mouse monoclonal antibody pair in PBS only storage buffer at a concentration of 1 mg/mL, ready for conjugation.

Matched antibody pairs are designed for use in a variety of assays and platforms that require matched antibody pairs.

Antibody use should be optimized for each application and assay.

Storage

Storage:
Store at -80°C.

Storage buffer:
PBS only

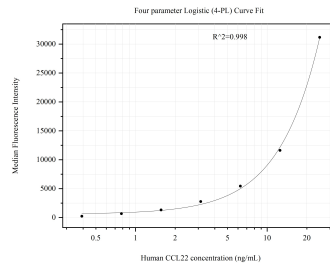
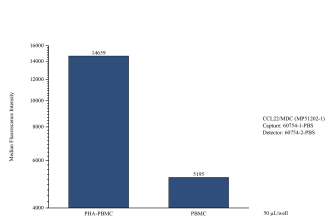
For technical support and original validation data for this product please contact:

T: 1 (888) 4PTGLAB (1-888-478-4522) (toll free in USA), or 1(312) 455-8498 (outside USA)

E: proteintech@ptglab.com
W: ptglab.com

This product is exclusively available under Proteintech Group brand and is not available to purchase from any other manufacturer.

Selected Validation Data



Cytometric bead array of Human peripheral blood mononuclear cells (PBMC) supernatant using MP51202-1, CCL22/MDC Monoclonal Matched Antibody Pair, PBS Only. Capture antibody: 60754-1-PBS. Detection antibody: 60754-2-PBS. PBMC were cultured unstimulated or stimulated with 10 µg/mL PHA for 3 days. 50 µL of the supernatant was analyzed using MP51202-1.

Cytometric bead array standard curve of MP51202-1, CCL22/MDC Monoclonal Matched Antibody Pair, PBS Only. Capture antibody: 60754-1-PBS. Detection antibody: 60754-2-PBS. Standard: Ag4275. Range: 0.391-25 ng/mL.