

For Research Use Only

Cardiac Troponin I Monoclonal Matched Antibody Pair, PBS Only



Catalog Number:MP51198-1

Capture Antibody Information

Catalog Number:
66376-2-PBS

Host:
Mouse

Isotype:
IgG2b

Purification Method:
Protein A purification

Clone ID:
1C5E8

Reactivity:
human, rabbit

Immunogen Catalog Number:
Ag16758

Conjugate:
Unconjugated

Full name:
troponin I type 3 (cardiac)

Gene ID:
7137

Detection Antibody Information

Catalog Number:
66376-1-PBS

Host:
Mouse

Isotype:
IgG1

Purification Method:
Protein G purification

Clone ID:
1D5D6

Reactivity:
human, mouse, rat, pig, rabbit

GenBank:
BC096165

Immunogen Catalog Number:
Ag16758

Conjugate:
Unconjugated

Full name:
troponin I type 3 (cardiac)

Gene ID:
7137

Applications

Tested Applications:
Cytometric bead array

Range:
12.5-400 ng/mL (Cytometric Bead
Array)

Recommended Dilutions:
It is recommended that this reagent
should be titrated in each testing
system to obtain optimal results.

Product Information

MP51198-1 targets Cardiac Troponin I in immunoassays as a matched antibody pair. Validated in Cytometric bead array.

Capture antibody: TNNI3 Monoclonal antibody, PBS Only (Capture) 66376-2-PBS (1C5E8). 100 µg. Concentration 1 mg/mL.

Detection antibody: Cardiac Troponin I Monoclonal antibody, PBS Only (Detector) 66376-1-PBS (1D5D6). 100 µg. Concentration 1 mg/mL.

Unconjugated mouse monoclonal antibody pair in PBS only storage buffer at a concentration of 1 mg/mL, ready for conjugation.

Matched antibody pairs are designed for use in a variety of assays and platforms that require matched antibody pairs.

Antibody use should be optimized for each application and assay.

Storage

Storage:
Store at -80°C.
Storage buffer:
PBS only

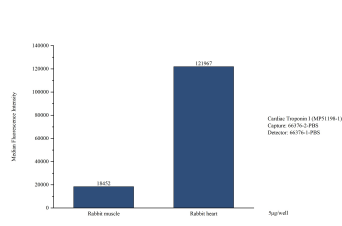
For technical support and original validation data for this product please contact:

T: 1 (888) 4PTGLAB (1-888-478-4522) (toll free
in USA), or 1(312) 455-8498 (outside USA)

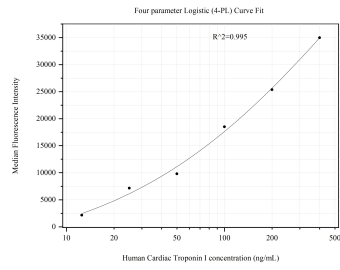
E: proteintech@ptglab.com
W: ptglab.com

This product is exclusively available under Proteintech Group brand and is not available to purchase from any other manufacturer.

Selected Validation Data



Cytometric bead array in cell lysate using MP51198-1, Cardiac Troponin I Monoclonal Matched Antibody Pair, PBS Only. Capture antibody: 66376-2-PBS. Detection antibody: 66376-1-PBS. Cell lysate: Rabbit muscle, Rabbit heart.



Cytometric bead array standard curve of MP51198-1, Cardiac Troponin I Monoclonal Matched Antibody Pair, PBS Only. Capture antibody: 66376-2-PBS. Detection antibody: 66376-1-PBS. Standard: Ag16758. Range: 12.5-400 ng/mL