

For Research Use Only

Cleaved PARP1 Monoclonal Matched Antibody Pair, PBS Only



Catalog Number:MP50985-2

Capture Antibody Information

Catalog Number:
60555-1-PBS
Host:
Mouse
Isotype:
IgG1
Purification Method:
Protein G purification

Clone ID:
4G4C8
Reactivity:
human, mouse, rat

Conjugate:
Unconjugated
Full name:
poly (ADP-ribose) polymerase 1
Gene ID:
142

Detection Antibody Information

Catalog Number:
66520-1-PBS
Host:
Mouse
Isotype:
IgG1
Purification Method:
Protein G purification

Clone ID:
1D7D4
Reactivity:
human, mouse, rat
GenBank:
BC037545
Immunogen Catalog Number:
Ag19173

Conjugate:
Unconjugated
Full name:
poly (ADP-ribose) polymerase 1
Gene ID:
142

Applications

Tested Applications:
N/A

Range:

Recommended Dilutions:
It is recommended that this reagent should be titrated in each testing system to obtain optimal results.

Product Information

MP50985-2 targets Cleaved PARP1 in immunoassays as a matched antibody pair. Validated in N/A.

Capture antibody: Cleaved PARP1 Monoclonal antibody, PBS Only (Capture) 60555-1-PBS (4G4C8). 100 µg. Concentration 1 mg/ml.

Detection antibody: PARP1 Monoclonal antibody, PBS Only (Capture/Detector) 66520-1-PBS (1D7D4). 100 µg. Concentration 1 mg/ml.

Unconjugated mouse monoclonal antibody pair in PBS only storage buffer at a concentration of 1 mg/mL, ready for conjugation.

Matched antibody pairs are designed for use in a variety of assays and platforms that require matched antibody pairs.

Antibody use should be optimized for each application and assay.

Storage

Storage:
Store at -80°C.
Storage buffer:
PBS only

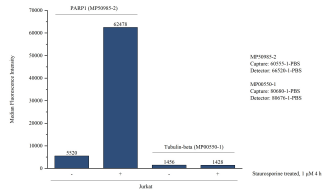
For technical support and original validation data for this product please contact:

T: 1 (888) 4PTGLAB (1-888-478-4522) (toll free in USA), or 1(312) 455-8498 (outside USA)

E: proteintech@ptglab.com
W: ptglab.com

This product is exclusively available under Proteintech Group brand and is not available to purchase from any other manufacturer.

Selected Validation Data



Cytometric bead array in cell lysate using MP50985-2, Cleaved PARP1 Monoclonal Matched Antibody Pair, PBS Only. Capture antibody: 60555-1-PBS. Detection antibody: 66520-1-PBS. Cell lysate: Non-treated Jurkat and Staurosporine treated Jurkat (10µg/well). Non-related target Tubulin-beta Recombinant Matched Antibody Pair (MP00550-1) was served as control.