

For Research Use Only

# SLC43A1 Monoclonal Matched Antibody Pair, PBS Only



Catalog Number:MP50952-2

## Capture Antibody Information

**Catalog Number:**  
60667-3-PBS

**Host:**  
Mouse

**Isotype:**  
IgG1

**Purification Method:**  
Protein G Magarose purification

**Clone ID:**  
1D11B9

**Reactivity:**  
human

**Immunogen Catalog Number:**  
Ag31817

**Conjugate:**  
Unconjugated

**Full name:**  
solute carrier family 43, member 1

**Gene ID:**  
8501

## Detection Antibody Information

**Catalog Number:**  
60667-4-PBS

**Host:**  
Mouse

**Isotype:**  
IgG1

**Purification Method:**  
Protein G Magarose purification

**Clone ID:**  
1C6D4

**Reactivity:**  
human

**GenBank:**  
BC001639

**Immunogen Catalog Number:**  
Ag31817

**Conjugate:**  
Unconjugated

**Full name:**  
solute carrier family 43, member 1

**Gene ID:**  
8501

## Applications

**Tested Applications:**  
Cytometric bead array

**Range:**  
1.563-200 ng/mL (Cytometric Bead Array)

**Recommended Dilutions:**  
It is recommended that this reagent should be titrated in each testing system to obtain optimal results.

## Product Information

MP50952-2 targets SLC43A1 in immunoassays as a matched antibody pair. Validated in Cytometric bead array.

Capture antibody: SLC43A1 Monoclonal antibody, PBS Only (Capture) 60667-3-PBS (1D11B9). 100 µg. Concentration 1 mg/ml.

Detection antibody: SLC43A1 Monoclonal antibody, PBS Only (Detector) 60667-4-PBS (1C6D4). 100 µg. Concentration 1 mg/ml.

Unconjugated mouse monoclonal antibody pair in PBS only storage buffer at a concentration of 1 mg/mL, ready for conjugation.

Matched antibody pairs are designed for use in a variety of assays and platforms that require matched antibody pairs.

Antibody use should be optimized for each application and assay.

## Storage

**Storage:**  
Store at -80°C.  
**Storage buffer:**  
PBS only

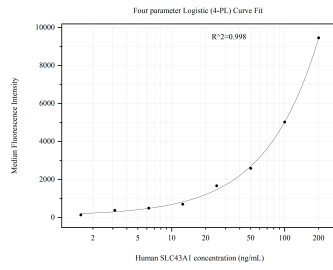
For technical support and original validation data for this product please contact:

T: 1 (888) 4PTGLAB (1-888-478-4522) (toll free in USA), or 1(312) 455-8498 (outside USA)

E: [proteintech@ptglab.com](mailto:proteintech@ptglab.com)  
W: [ptglab.com](http://ptglab.com)

**This product is exclusively available under Proteintech Group brand and is not available to purchase from any other manufacturer.**

## Selected Validation Data



Cytometric bead array standard curve of MP50952-2, SLC43A1 Monoclonal Matched Antibody Pair, PBS Only. Capture antibody: 60667-3-PBS. Detection antibody: 60667-4-PBS. Standard:Ag31817. Range: 1.563-200 ng/mL.