

For Research Use Only

# CYP46A1 Monoclonal Matched Antibody Pair, PBS Only



Catalog Number:MP50891-2

## Capture Antibody Information

**Catalog Number:**  
68576-4-PBS  
**Host:**  
Mouse  
**Isotype:**  
IgG1  
**Purification Method:**  
Protein G Magarose purification

**Clone ID:**  
1G10C8  
**Reactivity:**  
human  
**Immunogen Catalog Number:**  
Ag16786

**Conjugate:**  
Unconjugated  
**Full name:**  
cytochrome P450, family 46, subfamily A, polypeptide 1  
**Gene ID:**  
10858

## Detection Antibody Information

**Catalog Number:**  
68576-5-PBS  
**Host:**  
Mouse  
**Isotype:**  
IgG1  
**Purification Method:**  
Protein G Magarose purification

**Clone ID:**  
2E9F11  
**Reactivity:**  
human  
**GenBank:**  
BC022539  
**Immunogen Catalog Number:**  
Ag16786

**Conjugate:**  
Unconjugated  
**Full name:**  
cytochrome P450, family 46, subfamily A, polypeptide 1  
**Gene ID:**  
10858

## Applications

**Tested Applications:**  
Cytometric bead array

**Range:**  
0.391-100 ng/mL (Cytometric Bead Array)

**Recommended Dilutions:**  
It is recommended that this reagent should be titrated in each testing system to obtain optimal results.

## Product Information

MP50891-2 targets CYP46A1 in immunoassays as a matched antibody pair. Validated in Cytometric bead array.  
Capture antibody: CYP46A1 Monoclonal antibody, PBS Only (Capture/Detector) 68576-4-PBS (1G10C8). 100 µg. Concentration 1 mg/ml.  
Detection antibody: CYP46A1 Monoclonal antibody, PBS Only (Detector) 68576-5-PBS (2E9F11). 100 µg. Concentration 1 mg/ml.  
Alternative CYP46A1 matched antibody pairs: MP50891-1  
Unconjugated mouse monoclonal antibody pair in PBS only storage buffer at a concentration of 1 mg/mL, ready for conjugation.  
Matched antibody pairs are designed for use in a variety of assays and platforms that require matched antibody pairs.  
Antibody use should be optimized for each application and assay.

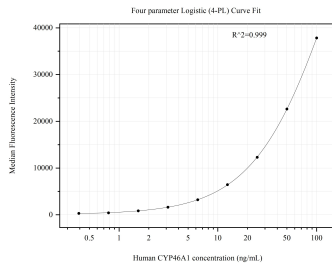
## Storage

**Storage:**  
Store at -80°C.  
**Storage buffer:**  
PBS only

For technical support and original validation data for this product please contact:  
T: 1 (888) 4PTGLAB (1-888-478-4522) (toll free in USA), or 1(312) 455-8498 (outside USA) E: proteintech@ptglab.com W: ptglab.com

This product is exclusively available under Proteintech Group brand and is not available to purchase from any other manufacturer.

## Selected Validation Data



Cytometric bead array standard curve of MP50891-2, CYP46A1 Monoclonal Matched Antibody Pair, PBS Only. Capture antibody: 68576-4-PBS. Detection antibody: 68576-5-PBS. Standard: Ag16786. Range: 0.391-100 ng/mL.