

For Research Use Only

LRP5 Monoclonal Matched Antibody Pair, PBS Only



Catalog Number:MP50882-3

Capture Antibody Information

Catalog Number:
60619-4-PBS
Host:
Mouse
Isotype:
IgG1
Purification Method:
Protein G purification

Clone ID:
2G6H4
Reactivity:
human
Immunogen Catalog Number:
Ag20043

Conjugate:
Unconjugated
Full name:
low density lipoprotein receptor-related protein 5
Gene ID:
4041

Detection Antibody Information

Catalog Number:
60619-3-PBS
Host:
Mouse
Isotype:
IgG1
Purification Method:
Protein G Magarose purification

Clone ID:
1B9E3
Reactivity:
human
GenBank:
BC150595
Immunogen Catalog Number:
Ag20043

Conjugate:
Unconjugated
Full name:
low density lipoprotein receptor-related protein 5
Gene ID:
4041

Applications

Tested Applications:
Cytometric bead array

Range:
0.391-100 ng/mL (Cytometric Bead Array)

Recommended Dilutions:
It is recommended that this reagent should be titrated in each testing system to obtain optimal results.

Product Information

MP50882-3 targets LRP5 in immunoassays as a matched antibody pair. Validated in Cytometric bead array.

Capture antibody: LRP5 Monoclonal antibody, PBS Only (Capture) 60619-4-PBS (2G6H4). 100 µg. Concentration 1 mg/ml.

Detection antibody: LRP5 Monoclonal antibody, PBS Only (Detector) 60619-3-PBS (1B9E3). 100 µg. Concentration 1 mg/ml.

Alternative LRP5 matched antibody pairs: MP50882-1, MP50882-2

Unconjugated mouse monoclonal antibody pair in PBS only storage buffer at a concentration of 1 mg/mL, ready for conjugation.

Matched antibody pairs are designed for use in a variety of assays and platforms that require matched antibody pairs.

Antibody use should be optimized for each application and assay.

Storage

Storage:
Store at -80°C.
Storage buffer:
PBS only

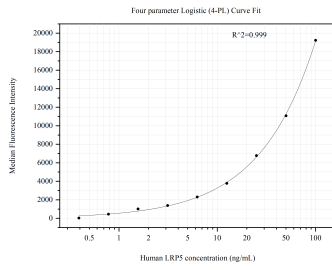
For technical support and original validation data for this product please contact:

T: 1 (888) 4PTGLAB (1-888-478-4522) (toll free in USA), or 1(312) 455-8498 (outside USA)

E: proteintech@ptglab.com
W: ptglab.com

This product is exclusively available under Proteintech Group brand and is not available to purchase from any other manufacturer.

Selected Validation Data



Cytometric bead array standard curve of MP50882-3, LRP5 Monoclonal Matched Antibody Pair, PBS Only. Capture antibody: 60619-4-PBS. Detection antibody: 60619-3-PBS. Standard: Ag20043. Range: 0.391-100 ng/mL.