

For Research Use Only

LRP5 Monoclonal Matched Antibody Pair, PBS Only



Catalog Number:MP50882-1

Capture Antibody Information

Catalog Number:
60619-1-PBS

Host:
Mouse

Isotype:
IgG1

Purification Method:
Protein G Magarose purification

Clone ID:
3B10B3

Reactivity:
human

Immunogen Catalog Number:
Ag20043

Conjugate:
Unconjugated

Full name:
low density lipoprotein receptor-related protein 5

Gene ID:
4041

Detection Antibody Information

Catalog Number:
60619-2-PBS

Host:
Mouse

Isotype:
IgG2a

Purification Method:
Protein A purification

Clone ID:
2D8C6

Reactivity:
human

GenBank:
BC150595

Immunogen Catalog Number:
Ag20043

Conjugate:
Unconjugated

Full name:
low density lipoprotein receptor-related protein 5

Gene ID:
4041

Applications

Tested Applications:
Cytometric bead array

Range:
0.781-100 ng/mL (Cytometric Bead Array)

Recommended Dilutions:
It is recommended that this reagent should be titrated in each testing system to obtain optimal results.

Product Information

MP50882-1 targets LRP5 in immunoassays as a matched antibody pair. Validated in Cytometric bead array.

Capture antibody: LRP5 Monoclonal antibody, PBS Only (Capture) 60619-1-PBS (3B10B3). 100 µg. Concentration 1 mg/ml.

Detection antibody: LRP5 Monoclonal antibody, PBS Only (Detector) 60619-2-PBS (2D8C6). 100 µg. Concentration 1 mg/ml.

Alternative LRP5 matched antibody pairs: MP50882-2, MP50882-3, MP50882-4

Unconjugated mouse monoclonal antibody pair in PBS only storage buffer at a concentration of 1 mg/mL, ready for conjugation.

Matched antibody pairs are designed for use in a variety of assays and platforms that require matched antibody pairs.

Antibody use should be optimized for each application and assay.

Storage

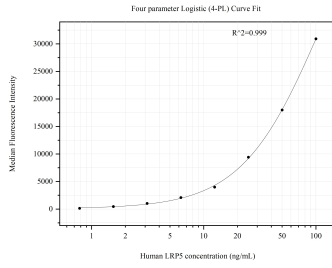
Storage:
Store at -80°C.

Storage buffer:
PBS only

For technical support and original validation data for this product please contact:
T: 1 (888) 4PTGLAB (1-888-478-4522) (toll free in USA), or 1(312) 455-8498 (outside USA) E: proteintech@ptglab.com
W: ptglab.com

This product is exclusively available under Proteintech Group brand and is not available to purchase from any other manufacturer.

Selected Validation Data



Cytometric bead array standard curve of MP50882-1, LRP5 Monoclonal Matched Antibody Pair, PBS Only. Capture antibody: 60619-1-PBS. Detection antibody: 60619-2-PBS. Standard: Ag20043. Range: 0.781-100 ng/mL.