

For Research Use Only



Phospho-STAT5A (Ser726) Monoclonal Matched Antibody Pair, PBS Only

Catalog Number:MP50852-1

Capture Antibody Information

Catalog Number:
66459-1-PBS
Host:
Mouse
Isotype:
IgG2a
Purification Method:
Protein A purification

Clone ID:
1F10F6
Reactivity:
human, mouse, rat, pig
Immunogen Catalog Number:
Ag19546

Conjugate:
Unconjugated
Full name:
signal transducer and activator of
transcription 5A
Gene ID:
6776

Detection Antibody Information

Catalog Number:
60596-1-PBS
Host:
Mouse
Isotype:
IgG1
Purification Method:
Protein G purification

Clone ID:
3D5G12
Reactivity:
human
GenBank:
BC027036

Conjugate:
Unconjugated
Full name:
signal transducer and activator of
transcription 5A
Gene ID:
6776

Applications

Tested Applications:
N/A

Range:

Recommended Dilutions:
It is recommended that this reagent
should be titrated in each testing
system to obtain optimal results.

Product Information

MP50852-1 targets Phospho-STAT5A (Ser726) in immunoassays as a matched antibody pair. Validated in N/A.
Capture antibody: STAT5A Monoclonal antibody, PBS Only (Capture) 66459-1-PBS (1F10F6). 100 µg. Concentration 1 mg/ml.
Detection antibody: STAT5A Monoclonal antibody, PBS Only (Detector) 60596-1-PBS (3D5G12). 100 µg. Concentration 1 mg/ml.
Unconjugated mouse monoclonal antibody pair in PBS only storage buffer at a concentration of 1 mg/mL, ready for conjugation.
Matched antibody pairs are designed for use in a variety of assays and platforms that require matched antibody pairs.
Antibody use should be optimized for each application and assay.

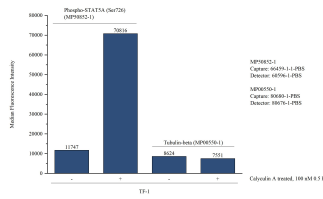
Storage

Storage:
Store at -80°C.
Storage buffer:
PBS only

For technical support and original validation data for this product please contact:
T: 1 (888) 4PTGLAB (1-888-478-4522) (toll free in USA), or 1(312) 455-8498 (outside USA) E: proteintech@ptglab.com
W: ptglab.com

This product is exclusively available under Proteintech Group brand and is not available to purchase from any other manufacturer.

Selected Validation Data



Cytometric bead array in cell lysate using MP50852-1, Phospho-STAT5A (Ser726) Monoclonal Matched Antibody Pair, PBS Only. Capture antibody: 66459-1-PBS. Detection antibody: 60596-1-PBS. Cell lysate: Non-treated TF-1 and Calyculin A treated TF-1 (30µg/well). Non-related target Tubulin-beta Recombinant Matched Antibody Pair (MP00550-1) was served as control.