

For Research Use Only

LPCAT2 Monoclonal Matched Antibody Pair, PBS Only



Catalog Number:MP50841-1

Capture Antibody Information

Catalog Number:
68476-2-PBS
Host:
Mouse
Isotype:
IgG1
Purification Method:
Protein G Magarose purification

Clone ID:
2B1A7
Reactivity:
human
Immunogen Catalog Number:
Ag26420

Conjugate:
Unconjugated
Full name:
lysophosphatidylcholine acyltransferase 2
Gene ID:
54947

Detection Antibody Information

Catalog Number:
68476-3-PBS
Host:
Mouse
Isotype:
IgG1
Purification Method:
Protein G Magarose purification

Clone ID:
1G8G8
Reactivity:
human
GenBank:
BC002472
Immunogen Catalog Number:
Ag26420

Conjugate:
Unconjugated
Full name:
lysophosphatidylcholine acyltransferase 2
Gene ID:
54947

Applications

Tested Applications:
Cytometric bead array

Range:
1.563-100 ng/mL (Cytometric Bead Array)

Recommended Dilutions:
It is recommended that this reagent should be titrated in each testing system to obtain optimal results.

Product Information

MP50841-1 targets LPCAT2 in immunoassays as a matched antibody pair. Validated in Cytometric bead array.

Capture antibody: LPCAT2 Monoclonal antibody, PBS Only (Capture) 68476-2-PBS (2B1A7). 100 µg. Concentration 1 mg/ml.

Detection antibody: LPCAT2 Monoclonal antibody, PBS Only (Detector) 68476-3-PBS (1G8G8). 100 µg. Concentration 1 mg/ml.

Unconjugated mouse monoclonal antibody pair in PBS only storage buffer at a concentration of 1 mg/mL, ready for conjugation.

Matched antibody pairs are designed for use in a variety of assays and platforms that require matched antibody pairs.

Antibody use should be optimized for each application and assay.

Storage

Storage:
Store at -80°C.
Storage buffer:
PBS only

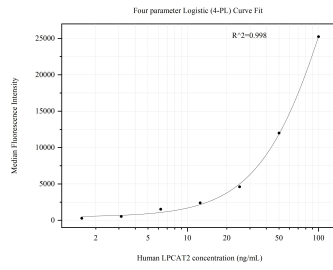
For technical support and original validation data for this product please contact:

T: 1 (888) 4PTGLAB (1-888-478-4522) (toll free in USA), or 1(312) 455-8498 (outside USA)

E: proteintech@ptglab.com
W: ptglab.com

This product is exclusively available under Proteintech Group brand and is not available to purchase from any other manufacturer.

Selected Validation Data



Cytometric bead array standard curve of MP50841-1, LPCAT2 Monoclonal Matched Antibody Pair, PBS Only. Capture antibody: 68476-2-PBS. Detection antibody: 68476-3-PBS. Standard: Ag26420. Range: 1.563-100 ng/mL.