

For Research Use Only

# LPCAT1 Monoclonal Matched Antibody Pair, PBS Only



Catalog Number:MP50776-3

## Capture Antibody Information

**Catalog Number:**  
66044-1-PBS  
**Host:**  
Mouse  
**Isotype:**  
IgG2b  
**Purification Method:**  
Protein A purification

**Clone ID:**  
8B6E9  
**Reactivity:**  
human, mouse, rat  
**Immunogen Catalog Number:**  
Ag9060

**Conjugate:**  
Unconjugated  
**Full name:**  
lysophosphatidylcholine acyltransferase 1  
**Gene ID:**  
79888

## Detection Antibody Information

**Catalog Number:**  
66044-2-PBS  
**Host:**  
Mouse  
**Isotype:**  
IgG1  
**Purification Method:**  
Protein G Magarose purification

**Clone ID:**  
2C11D12  
**Reactivity:**  
human  
**GenBank:**  
BC020166  
**Immunogen Catalog Number:**  
Ag9060

**Conjugate:**  
Unconjugated  
**Full name:**  
lysophosphatidylcholine acyltransferase 1  
**Gene ID:**  
79888

## Applications

**Tested Applications:**  
Cytometric bead array

**Range:**  
0.391-100 ng/mL (Cytometric Bead Array)

**Recommended Dilutions:**  
It is recommended that this reagent should be titrated in each testing system to obtain optimal results.

## Product Information

MP50776-3 targets LPCAT1 in immunoassays as a matched antibody pair. Validated in Cytometric bead array.

Capture antibody: LPCAT1 Monoclonal antibody, PBS Only (Capture) 66044-1-PBS (8B6E9). 100 µg. Concentration 1 mg/ml.

Detection antibody: LPCAT1 Monoclonal antibody, PBS Only (Capture/Detector) 66044-2-PBS (2C11D12). 100 µg. Concentration 1 mg/ml.

Alternative LPCAT1 matched antibody pairs: MP50776-1, MP50776-2

Unconjugated mouse monoclonal antibody pair in PBS only storage buffer at a concentration of 1 mg/mL, ready for conjugation.

Matched antibody pairs are designed for use in a variety of assays and platforms that require matched antibody pairs.

Antibody use should be optimized for each application and assay.

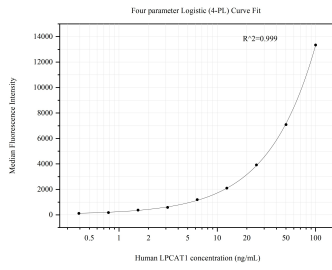
## Storage

**Storage:**  
Store at -80°C.  
**Storage buffer:**  
PBS only

For technical support and original validation data for this product please contact:  
T: 1 (888) 4PTGLAB (1-888-478-4522) (toll free in USA), or 1(312) 455-8498 (outside USA)      E: proteintech@ptglab.com  
W: ptglab.com

This product is exclusively available under Proteintech Group brand and is not available to purchase from any other manufacturer.

## Selected Validation Data



Cytometric bead array standard curve of MP50776-3, LPCAT1 Monoclonal Matched Antibody Pair, PBS Only. Capture antibody: 66044-1-PBS. Detection antibody: 66044-2-PBS. Standard: Ag9060. Range: 0.391-100 ng/mL.