

For Research Use Only

LPCAT1 Monoclonal Matched Antibody Pair, PBS Only



Catalog Number:MP50776-2

Capture Antibody Information

Catalog Number:
66044-1-PBS
Host:
Mouse
Isotype:
IgG2b
Purification Method:
Protein A purification

Clone ID:
8B6E9
Reactivity:
human, mouse, rat
Immunogen Catalog Number:
Ag9060

Conjugate:
Unconjugated
Full name:
lysophosphatidylcholine acyltransferase 1
Gene ID:
79888

Detection Antibody Information

Catalog Number:
66044-3-PBS
Host:
Mouse
Isotype:
IgG2b
Purification Method:
Protein A Magarose purification

Clone ID:
4G2D5
Reactivity:
human
GenBank:
BC020166
Immunogen Catalog Number:
Ag9060

Conjugate:
Unconjugated
Full name:
lysophosphatidylcholine acyltransferase 1
Gene ID:
79888

Applications

Tested Applications:
Cytometric bead array

Range:
0.391-25 ng/mL (Cytometric Bead Array)

Recommended Dilutions:
It is recommended that this reagent should be titrated in each testing system to obtain optimal results.

Product Information

MP50776-2 targets LPCAT1 in immunoassays as a matched antibody pair. Validated in Cytometric bead array.

Capture antibody: LPCAT1 Monoclonal antibody, PBS Only (Capture) 66044-1-PBS (8B6E9). 100 µg. Concentration 1 mg/ml.

Detection antibody: LPCAT1 Monoclonal antibody, PBS Only (Detector) 66044-3-PBS (4G2D5). 100 µg. Concentration 1 mg/ml.

Alternative LPCAT1 matched antibody pairs: MP50776-1

Unconjugated mouse monoclonal antibody pair in PBS only storage buffer at a concentration of 1 mg/mL, ready for conjugation.

Matched antibody pairs are designed for use in a variety of assays and platforms that require matched antibody pairs.

Antibody use should be optimized for each application and assay.

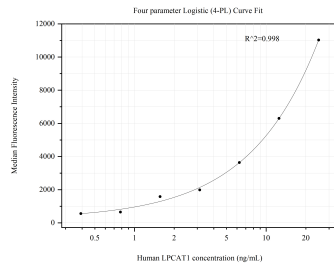
Storage

Storage:
Store at -80°C.
Storage buffer:
PBS only

For technical support and original validation data for this product please contact:
T: 1 (888) 4PTGLAB (1-888-478-4522) (toll free in USA), or 1(312) 455-8498 (outside USA) E: proteintech@ptglab.com
W: ptglab.com

This product is exclusively available under Proteintech Group brand and is not available to purchase from any other manufacturer.

Selected Validation Data



Cytometric bead array standard curve of MP50776-2, LPCAT1 Monoclonal Matched Antibody Pair, PBS Only. Capture antibody: 66044-1-PBS. Detection antibody: 66044-3-PBS. Standard: Ag9060. Range: 0.391-25 ng/mL