

For Research Use Only

C20orf30 Monoclonal Matched Antibody Pair, PBS Only



Catalog Number:MP50730-2

Capture Antibody Information

Catalog Number:

67247-2-PBS

Host:

Mouse

Isotype:

IgG1

Purification Method:

Protein G Magarose purification

Clone ID:

4E7A7

Reactivity:

human

Immunogen Catalog Number:

Ag15080

Conjugate:

Unconjugated

Full name:

chromosome 20 open reading frame 30

Gene ID:

29058

Detection Antibody Information

Catalog Number:

67247-4-PBS

Host:

Mouse

Isotype:

IgG2b

Purification Method:

Protein A Magarose purification

Clone ID:

3A6A6

Reactivity:

human

GenBank:

BC011990

Immunogen Catalog Number:

Ag15080

Conjugate:

Unconjugated

Full name:

chromosome 20 open reading frame 30

Gene ID:

29058

Applications

Tested Applications:

Cytometric bead array

Range:

0.391-100 ng/mL (Cytometric Bead Array)

Recommended Dilutions:

It is recommended that this reagent should be titrated in each testing system to obtain optimal results.

Product Information

MP50730-2 targets C20orf30 in immunoassays as a matched antibody pair. Validated in Cytometric bead array.

Capture antibody: C20orf30 Monoclonal antibody, PBS Only (Capture) 67247-2-PBS (4E7A7). 100 µg. Concentration 1 mg/ml.

Detection antibody: C20orf30 Monoclonal antibody, PBS Only (Capture/Detector) 67247-4-PBS (3A6A6). 100 µg. Concentration 1 mg/ml.

Alternative C20orf30 matched antibody pairs: MP50730-1

Unconjugated mouse monoclonal antibody pair in PBS only storage buffer at a concentration of 1 mg/mL, ready for conjugation.

Matched antibody pairs are designed for use in a variety of assays and platforms that require matched antibody pairs.

Antibody use should be optimized for each application and assay.

Storage

Storage:

Store at -80°C.

Storage buffer:

PBS only

For technical support and original validation data for this product please contact:

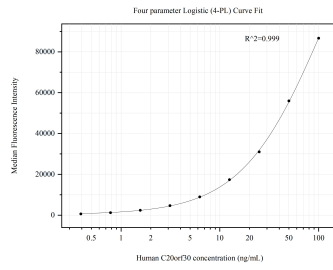
T: 1 (888) 4PTGLAB (1-888-478-4522) (toll free in USA), or 1(312) 455-8498 (outside USA)

E: proteintech@ptglab.com

W: ptglab.com

This product is exclusively available under Proteintech Group brand and is not available to purchase from any other manufacturer.

Selected Validation Data



Cytometric bead array standard curve of MP50730-2, C20orf30 Monoclonal Matched Antibody Pair, PBS Only. Capture antibody: 67247-2-PBS. Detection antibody: 67247-4-PBS. Standard: Ag15080. Range: 0.391-100 ng/mL.