

For Research Use Only



ALDH2 Monoclonal Matched Antibody Pair, PBS Only

Catalog Number:MP50663-4

Capture Antibody Information

Catalog Number:
68237-4-PBS
Host:
Mouse
Isotype:
IgG2b
Purification Method:
Protein A Magarose purification

Clone ID:
2E12G4
Reactivity:
human
Immunogen Catalog Number:
Ag7463

Conjugate:
Unconjugated
Full name:
aldehyde dehydrogenase 2 family (mitochondrial)
Gene ID:
217

Detection Antibody Information

Catalog Number:
68237-8-PBS
Host:
Mouse
Isotype:
IgG3
Purification Method:
Protein A Magarose purification

Clone ID:
1H8B10
Reactivity:
human
GenBank:
BC002967
Immunogen Catalog Number:
Ag7463

Conjugate:
Unconjugated
Full name:
aldehyde dehydrogenase 2 family (mitochondrial)
Gene ID:
217

Applications

Tested Applications:
Cytometric bead array

Range:
1.563-200 ng/mL (Cytometric Bead Array)

Recommended Dilutions:
It is recommended that this reagent should be titrated in each testing system to obtain optimal results.

Product Information

MP50663-4 targets ALDH2 in immunoassays as a matched antibody pair. Validated in Cytometric bead array.
Capture antibody: ALDH2 Monoclonal antibody, PBS Only (Capture) 68237-4-PBS (2E12G4). 100 µg. Concentration 1 mg/ml.
Detection antibody: ALDH2 Monoclonal antibody, PBS Only (Detector) 68237-8-PBS (1H8B10). 100 µg. Concentration 1 mg/ml.
Alternative ALDH2 matched antibody pairs: MP50663-1, MP50663-2, MP50663-3
Unconjugated mouse monoclonal antibody pair in PBS only storage buffer at a concentration of 1 mg/mL, ready for conjugation.
Matched antibody pairs are designed for use in a variety of assays and platforms that require matched antibody pairs.
Antibody use should be optimized for each application and assay.

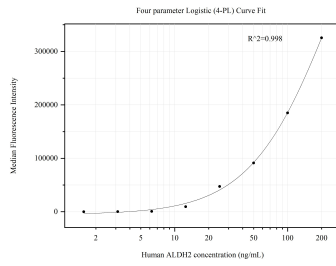
Storage

Storage:
Store at -80°C.
Storage buffer:
PBS only

For technical support and original validation data for this product please contact:
T: 1 (888) 4PTGLAB (1-888-478-4522) (toll free in USA), or 1(312) 455-8498 (outside USA) E: proteintech@ptglab.com
W: ptglab.com

This product is exclusively available under Proteintech Group brand and is not available to purchase from any other manufacturer.

Selected Validation Data



Cytometric bead array standard curve of MP50663-4, ALDH2 Monoclonal Matched Antibody Pair, PBS Only. Capture antibody: 68237-4-PBS. Detection antibody: 68237-8-PBS. Standard: Ag7463. Range: 1.563-200 ng/mL.