

MYL3 Monoclonal Matched Antibody Pair, PBS Only

Catalog Number: **MP50642-3**

Capture Antibody Information

Catalog Number:

66286-1-PBS

Host:

Mouse

Isotype:

IgG1

Purification Method:

Protein G purification

Clone ID:

2E4B2

Reactivity:

human, mouse, rat, pig

Immunogen Catalog Number:

Ag24535

Conjugate:

Unconjugated

Full name:

myosin, light chain 3, alkali;
ventricular, skeletal, slow

Gene ID:

4634

Detection Antibody Information

Catalog Number:

66286-5-PBS

Host:

Mouse

Isotype:

IgG1

Purification Method:

Protein G Magarose purification

Clone ID:

2D1A2

Reactivity:

human

GenBank:

BC009790

Immunogen Catalog Number:

Ag24535

Conjugate:

Unconjugated

Full name:

myosin, light chain 3, alkali;
ventricular, skeletal, slow

Gene ID:

4634

Applications

Tested Applications:

Cytometric bead array

Range:

0.098-6.25 ng/mL (Cytometric Bead Array)

Recommended Dilutions:

It is recommended that this reagent should be titrated in each testing system to obtain optimal results.

Product Information

MP50642-3 targets MYL3 in immunoassays as a matched antibody pair. Validated in Cytometric bead array.

Capture antibody: MYL3 Monoclonal antibody, PBS Only (Capture) 66286-1-PBS (2E4B2). 100 µg. Concentration 1 mg/ml.

Detection antibody: MYL3 Monoclonal antibody, PBS Only (Detector) 66286-5-PBS (2D1A2). 100 µg. Concentration 1 mg/ml.

Alternative MYL3 matched antibody pairs: MP50642-1, MP50642-2

Unconjugated mouse monoclonal antibody pair in PBS only storage buffer at a concentration of 1 mg/mL, ready for conjugation.

Matched antibody pairs are designed for use in a variety of assays and platforms that require matched antibody pairs.

Antibody use should be optimized for each application and assay.

Storage

Storage:

Store at -80°C.

Storage buffer:

PBS only

For technical support and original validation data for this product please contact:

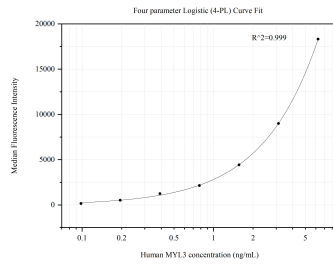
T: 1 (888) 4PTGLAB (1-888-478-4522) (toll free in USA), or 1(312) 455-8498 (outside USA)

E: proteintech@ptglab.com

W: ptglab.com

This product is exclusively available under Proteintech Group brand and is not available to purchase from any other manufacturer.

Selected Validation Data



Cytometric bead array standard curve of MP50642-3, MYL3 Monoclonal Matched Antibody Pair, PBS Only. Capture antibody: 66286-1-PBS. Detection antibody: 66286-5-PBS. Standard: Ag24535. Range: 0.098-6.25 ng/mL.