

For Research Use Only

ALAS2 Monoclonal Matched Antibody Pair, PBS Only



Catalog Number:MP50624-1

Capture Antibody Information

Catalog Number:

68332-1-PBS

Host:

Mouse

Isotype:

IgG1

Purification Method:

Protein G purification

Clone ID:

2C1H1

Reactivity:

human

Immunogen Catalog Number:

Ag13524

Conjugate:

Unconjugated

Full name:

aminolevulinate, delta-, synthase 2

Gene ID:

212

Detection Antibody Information

Catalog Number:

68332-2-PBS

Host:

Mouse

Isotype:

IgG1

Purification Method:

Protein G purification

Clone ID:

2B3C12

Reactivity:

human

GenBank:

BC030230

Immunogen Catalog Number:

Ag13524

Conjugate:

Unconjugated

Full name:

aminolevulinate, delta-, synthase 2

Gene ID:

212

Applications

Tested Applications:

Cytometric bead array

Range:

6.25-100 ng/mL (Cytometric Bead Array)

Recommended Dilutions:

It is recommended that this reagent should be titrated in each testing system to obtain optimal results.

Product Information

MP50624-1 targets ALAS2 in immunoassays as a matched antibody pair. Validated in Cytometric bead array.

Capture antibody: ALAS2 Monoclonal antibody, PBS Only (Capture) 68332-1-PBS (2C1H1). 100 µg. Concentration 1 mg/ml.

Detection antibody: ALAS2 Monoclonal antibody, PBS Only (Capture/Detector) 68332-2-PBS (2B3C12). 100 µg. Concentration 1 mg/ml.

Alternative ALAS2 matched antibody pairs: MP50624-2, MP50624-3, MP50624-4

Unconjugated mouse monoclonal antibody pair in PBS only storage buffer at a concentration of 1 mg/mL, ready for conjugation.

Matched antibody pairs are designed for use in a variety of assays and platforms that require matched antibody pairs.

Antibody use should be optimized for each application and assay.

Storage

Storage:

Store at -80°C.

Storage buffer:

PBS only

For technical support and original validation data for this product please contact:

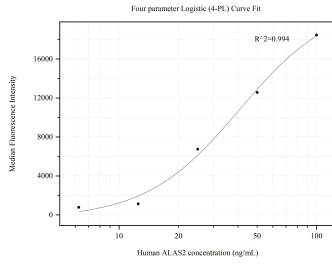
T: 1 (888) 4PTGLAB (1-888-478-4522) (toll free in USA), or 1(312) 455-8498 (outside USA)

E: proteintech@ptglab.com

W: ptglab.com

This product is exclusively available under Proteintech Group brand and is not available to purchase from any other manufacturer.

Selected Validation Data



Cytometric bead array standard curve of MP50624-1, ALAS2 Monoclonal Matched Antibody Pair, PBS Only. Capture antibody: 68332-1-PBS. Detection antibody: 68332-2-PBS. Standard: Ag13524. Range: 6.25-100 ng/mL