

For Research Use Only

# SLC25A3 Monoclonal Matched Antibody Pair, PBS Only



Catalog Number:MP50610-3

## Capture Antibody Information

**Catalog Number:**  
60451-5-PBS  
**Host:**  
Mouse  
**Isotype:**  
IgG1  
**Purification Method:**  
Protein G Magarose purification

**Clone ID:**  
3F9G3  
**Reactivity:**  
human  
**Immunogen Catalog Number:**  
Ag4377

**Conjugate:**  
Unconjugated  
**Full name:**  
solute carrier family 25  
(mitochondrial carrier; phosphate  
carrier), member 3  
**Gene ID:**  
5250

## Detection Antibody Information

**Catalog Number:**  
60451-4-PBS  
**Host:**  
Mouse  
**Isotype:**  
IgG1  
**Purification Method:**  
Protein G Magarose purification

**Clone ID:**  
2B6F6  
**Reactivity:**  
human  
**GenBank:**  
BC003504  
**Immunogen Catalog Number:**  
Ag4377

**Conjugate:**  
Unconjugated  
**Full name:**  
solute carrier family 25  
(mitochondrial carrier; phosphate  
carrier), member 3  
**Gene ID:**  
5250

## Applications

**Tested Applications:**  
Cytometric bead array

**Range:**  
0.195-12.5 ng/mL (Cytometric Bead Array)

**Recommended Dilutions:**  
It is recommended that this reagent should be titrated in each testing system to obtain optimal results.

## Product Information

MP50610-3 targets SLC25A3 in immunoassays as a matched antibody pair. Validated in Cytometric bead array.

Capture antibody: SLC25A3 Monoclonal antibody, PBS Only (Capture) 60451-5-PBS (3F9G3). 100 µg. Concentration 1 mg/ml.

Detection antibody: SLC25A3 Monoclonal antibody, PBS Only (Detector) 60451-4-PBS (2B6F6). 100 µg. Concentration 1 mg/ml.

Alternative SLC25A3 matched antibody pairs: MP00046-1, MP00046-2, MP00046-3, MP50610-1, MP50610-2

Unconjugated mouse monoclonal antibody pair in PBS only storage buffer at a concentration of 1 mg/mL, ready for conjugation.

Matched antibody pairs are designed for use in a variety of assays and platforms that require matched antibody pairs.

Antibody use should be optimized for each application and assay.

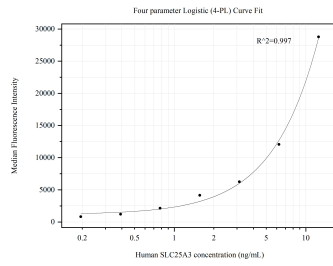
## Storage

**Storage:**  
Store at -80°C.  
**Storage buffer:**  
PBS only

For technical support and original validation data for this product please contact:  
T: 1 (888) 4PTGLAB (1-888-478-4522) (toll free in USA), or 1(312) 455-8498 (outside USA) E: [proteintech@ptglab.com](mailto:proteintech@ptglab.com) W: [ptglab.com](http://ptglab.com)

This product is exclusively available under Proteintech Group brand and is not available to purchase from any other manufacturer.

## Selected Validation Data



Cytometric bead array standard curve of MP50610-3, SLC25A3 Monoclonal Matched Antibody Pair, PBS Only. Capture antibody: 60451-5-PBS. Detection antibody: 60451-4-PBS. Standard: Ag4377. Range: 0.195-12.5 ng/mL.