

For Research Use Only

ALDH18A1 Monoclonal Matched Antibody Pair, PBS Only



Catalog Number:MP50575-1

Capture Antibody Information

Catalog Number:
68184-2-PBS

Host:
Mouse

Isotype:
IgG2a

Purification Method:
Protein A purification

Clone ID:
1A9D8

Reactivity:
human

Immunogen Catalog Number:
Ag12100

Conjugate:
Unconjugated

Full name:
aldehyde dehydrogenase 18 family,
member A1

Gene ID:
5832

Detection Antibody Information

Catalog Number:
68184-3-PBS

Host:
Mouse

Isotype:
IgG1

Purification Method:
Protein G purification

Clone ID:
2B1D9

Reactivity:
human

GenBank:
BC106054

Immunogen Catalog Number:
Ag12100

Conjugate:
Unconjugated

Full name:
aldehyde dehydrogenase 18 family,
member A1

Gene ID:
5832

Applications

Tested Applications:
Cytometric bead array

Range:
0.195-200 ng/mL (Cytometric Bead Array)

Recommended Dilutions:
It is recommended that this reagent should be titrated in each testing system to obtain optimal results.

Product Information

MP50575-1 targets ALDH18A1 in immunoassays as a matched antibody pair. Validated in Cytometric bead array.

Capture antibody: P5CS Monoclonal antibody, PBS Only (Capture) 68184-2-PBS (1A9D8). 100 µg. Concentration 1 mg/ml.

Detection antibody: P5CS Monoclonal antibody, PBS Only (Detector) 68184-3-PBS (2B1D9). 100 µg. Concentration 1 mg/ml.

Unconjugated mouse monoclonal antibody pair in PBS only storage buffer at a concentration of 1 mg/mL, ready for conjugation.

Matched antibody pairs are designed for use in a variety of assays and platforms that require matched antibody pairs.

Antibody use should be optimized for each application and assay.

Storage

Storage:
Store at -80°C.
Storage buffer:
PBS only

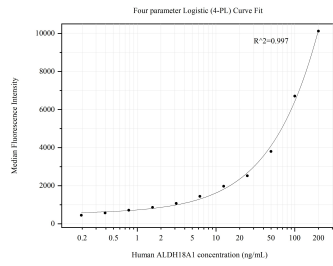
For technical support and original validation data for this product please contact:

T: 1 (888) 4PTGLAB (1-888-478-4522) (toll free in USA), or 1(312) 455-8498 (outside USA)

E: proteintech@ptglab.com
W: ptglab.com

This product is exclusively available under Proteintech Group brand and is not available to purchase from any other manufacturer.

Selected Validation Data



Cytometric bead array standard curve of MP50575-1, ALDH18A1 Monoclonal Matched Antibody Pair, PBS Only. Capture antibody: 68184-2-PBS. Detection antibody: 68184-3-PBS. Standard: Ag12100. Range: 0.195-200 ng/mL