

For Research Use Only

# CD63 Monoclonal Matched Antibody Pair, PBS Only



Catalog Number:MP50558-3

## Capture Antibody Information

**Catalog Number:**  
67605-5-PBS

**Host:**  
Mouse

**Isotype:**  
IgG1

**Purification Method:**  
Protein G Magarose purification

**Clone ID:**  
1E11C1

**Reactivity:**  
human

**Immunogen Catalog Number:**  
Ag19690

**Conjugate:**  
Unconjugated

**Full name:**  
CD63 molecule

**Gene ID:**  
967

## Detection Antibody Information

**Catalog Number:**  
67605-6-PBS

**Host:**  
Mouse

**Isotype:**  
IgG1

**Purification Method:**  
Protein G Magarose purification

**Clone ID:**  
3D9B6

**Reactivity:**  
human

**GenBank:**  
BC002349

**Immunogen Catalog Number:**  
Ag19690

**Conjugate:**  
Unconjugated

**Full name:**  
CD63 molecule

**Gene ID:**  
967

## Applications

**Tested Applications:**  
Cytometric bead array

**Range:**  
6.25-100 ng/mL (Cytometric Bead Array)

**Recommended Dilutions:**  
It is recommended that this reagent should be titrated in each testing system to obtain optimal results.

## Product Information

MP50558-3 targets CD63 in immunoassays as a matched antibody pair. Validated in Cytometric bead array.

Capture antibody: CD63 Monoclonal antibody, PBS Only (Capture) 67605-5-PBS (1E11C1). 100 µg. Concentration 1 mg/mL.

Detection antibody: CD63 Monoclonal antibody, PBS Only (Detector) 67605-6-PBS (3D9B6). 100 µg. Concentration 1 mg/mL.

Alternative CD63 matched antibody pairs: MP50558-1, MP50558-2

Unconjugated mouse monoclonal antibody pair in PBS only storage buffer at a concentration of 1 mg/mL, ready for conjugation.

Matched antibody pairs are designed for use in a variety of assays and platforms that require matched antibody pairs.

Antibody use should be optimized for each application and assay.

## Storage

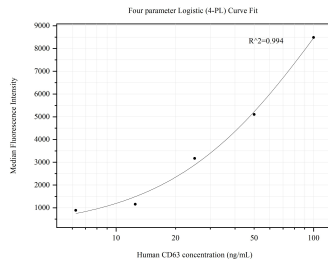
**Storage:**  
Store at -80°C.

**Storage buffer:**  
PBS only

For technical support and original validation data for this product please contact:  
T: 1 (888) 4PTGLAB (1-888-478-4522) (toll free in USA), or 1(312) 455-8498 (outside USA)      E: proteintech@ptglab.com  
W: ptglab.com

**This product is exclusively available under Proteintech Group brand and is not available to purchase from any other manufacturer.**

## Selected Validation Data



Cytometric bead array standard curve of MP50558-3, CD63 Monoclonal Matched Antibody Pair, PBS Only. Capture antibody: 67605-5-PBS. Detection antibody: 67605-6-PBS. Standard: Ag19690. Range: 6.25-100 ng/mL