

For Research Use Only

# DLAT Monoclonal Matched Antibody Pair, PBS Only



Catalog Number:MP50549-1

## Capture Antibody Information

Catalog Number:  
68303-2-PBS

Host:  
Mouse

Isotype:  
IgG1

Purification Method:  
Protein G Magarose purification

Clone ID:  
1G6H6

Reactivity:  
human

Immunogen Catalog Number:  
Ag4226

Conjugate:  
Unconjugated

Full name:  
dihydroliipoamide S-acetyltransferase

Gene ID:  
1737

## Detection Antibody Information

Catalog Number:  
68303-3-PBS

Host:  
Mouse

Isotype:  
IgG2b

Purification Method:  
Protein A Magarose purification

Clone ID:  
1E4A9

Reactivity:  
human

GenBank:  
BC039084

Immunogen Catalog Number:  
Ag4226

Conjugate:  
Unconjugated

Full name:  
dihydroliipoamide S-acetyltransferase

Gene ID:  
1737

## Applications

Tested Applications:  
Cytometric bead array

Range:  
0.098-50 ng/mL (Cytometric Bead Array)

Recommended Dilutions:  
It is recommended that this reagent should be titrated in each testing system to obtain optimal results.

## Product Information

MP50549-1 targets DLAT in immunoassays as a matched antibody pair. Validated in Cytometric bead array.

Capture antibody: DLAT Monoclonal antibody, PBS Only (Capture) 68303-2-PBS (1G6H6). 100 µg. Concentration 1 mg/mL.

Detection antibody: DLAT Monoclonal antibody, PBS Only (Detector) 68303-3-PBS (1E4A9). 100 µg. Concentration 1 mg/mL.

Alternative DLAT matched antibody pairs: MP00635-1, MP00635-2, MP00635-3, MP50549-2, MP50549-3, MP50549-4  
Unconjugated mouse monoclonal antibody pair in PBS only storage buffer at a concentration of 1 mg/mL, ready for conjugation.

Matched antibody pairs are designed for use in a variety of assays and platforms that require matched antibody pairs.

Antibody use should be optimized for each application and assay.

## Storage

Storage:  
Store at -80°C.  
Storage buffer:  
PBS only

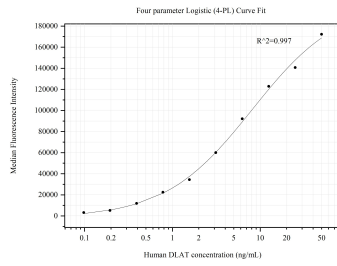
For technical support and original validation data for this product please contact:

T: 1 (888) 4PTGLAB (1-888-478-4522) (toll free in USA), or 1(312) 455-8498 (outside USA)

E: [proteintech@ptglab.com](mailto:proteintech@ptglab.com)  
W: [ptglab.com](http://ptglab.com)

This product is exclusively available under Proteintech Group brand and is not available to purchase from any other manufacturer.

## Selected Validation Data



Cytometric bead array standard curve of MP50549-1, DLAT Monoclonal Matched Antibody Pair, PBS Only. Capture antibody: 68303-2-PBS. Detection antibody: 68303-3-PBS. Standard: Ag4226. Range: 0.098-50 ng/mL