

For Research Use Only

ALDH1L2 Monoclonal Matched Antibody Pair, PBS Only



Catalog Number:MP50511-1

Capture Antibody Information

Catalog Number:
60405-1-PBS
Host:
Mouse
Isotype:
IgG1
Purification Method:
Protein G Magarose purification

Clone ID:
1F11C3
Reactivity:
human
Immunogen Catalog Number:
Ag17340

Conjugate:
Unconjugated
Full name:
aldehyde dehydrogenase 1 family, member L2
Gene ID:
160428

Detection Antibody Information

Catalog Number:
60405-2-PBS
Host:
Mouse
Isotype:
IgG2b
Purification Method:
Protein A Magarose purification

Clone ID:
1F3H1
Reactivity:
human
GenBank:
BC103935
Immunogen Catalog Number:
Ag17340

Conjugate:
Unconjugated
Full name:
aldehyde dehydrogenase 1 family, member L2
Gene ID:
160428

Applications

Tested Applications:
Cytometric bead array

Range:
0.391-12.5 ng/mL (Cytometric Bead Array)

Recommended Dilutions:
It is recommended that this reagent should be titrated in each testing system to obtain optimal results.

Product Information

MP50511-1 targets ALDH1L2 in immunoassays as a matched antibody pair. Validated in Cytometric bead array.
Capture antibody: ALDH1L2 Monoclonal antibody, PBS Only (Capture) 60405-1-PBS (1F11C3). 100 µg. Concentration 1 mg/mL.
Detection antibody: ALDH1L2 Monoclonal antibody, PBS Only (Detector) 60405-2-PBS (1F3H1). 100 µg. Concentration 1 mg/mL.
Alternative ALDH1L2 matched antibody pairs: MP50511-2, MP50511-3, MP50511-4
Unconjugated mouse monoclonal antibody pair in PBS only storage buffer at a concentration of 1 mg/mL, ready for conjugation.
Matched antibody pairs are designed for use in a variety of assays and platforms that require matched antibody pairs.
Antibody use should be optimized for each application and assay.

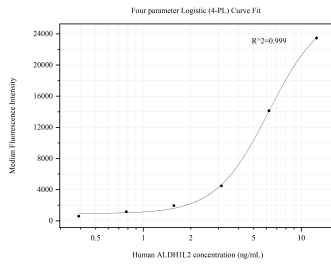
Storage

Storage:
Store at -80°C.
Storage buffer:
PBS only

For technical support and original validation data for this product please contact:
T: 1 (888) 4PTGLAB (1-888-478-4522) (toll free in USA), or 1(312) 455-8498 (outside USA) E: proteintech@ptglab.com W: ptglab.com

This product is exclusively available under Proteintech Group brand and is not available to purchase from any other manufacturer.

Selected Validation Data



Cytometric bead array standard curve of MP50511-1, ALDH1L2 Monoclonal Matched Antibody Pair, PBS Only. Capture antibody: 60405-1-PBS. Detection antibody: 60405-2-PBS. Standard: Ag17340. Range: 0.391-12.5 ng/mL.