

For Research Use Only

CD147 Monoclonal Matched Antibody Pair, PBS Only



Catalog Number:MP50494-4

Capture Antibody Information

Catalog Number:
60401-3-PBS

Host:
Mouse

Isotype:
IgG1

Purification Method:
Protein G purification

Clone ID:
1E2G4

Reactivity:
human

Conjugate:
Unconjugated

Full name:
basigin (Ok blood group)

Gene ID:
682

Detection Antibody Information

Catalog Number:
60401-1-PBS

Host:
Mouse

Isotype:
IgG1

Purification Method:
Protein G purification

Clone ID:
1D2D3

Reactivity:
human

GenBank:
BC009040

Conjugate:
Unconjugated

Full name:
basigin (Ok blood group)

Gene ID:
682

Applications

Tested Applications:
Cytometric bead array

Range:
0.098-100 ng/mL (Cytometric Bead Array)

Recommended Dilutions:
It is recommended that this reagent should be titrated in each testing system to obtain optimal results.

Product Information

MP50494-4 targets CD147 in immunoassays as a matched antibody pair. Validated in Cytometric bead array.

Capture antibody: CD147 Monoclonal antibody, PBS Only (Capture) 60401-3-PBS (1E2G4). 100 µg. Concentration 1 mg/ml.

Detection antibody: CD147 Monoclonal antibody, PBS Only (Capture/Detector) 60401-1-PBS (1D2D3). 100 µg. Concentration 1 mg/ml.

Alternative CD147 matched antibody pairs: MP00004-1, MP00004-2, MP00004-3, MP00004-4, MP01320-1, MP01320-2, MP01320-3, MP50494-1, MP50494-2, MP50494-3

Unconjugated mouse monoclonal antibody pair in PBS only storage buffer at a concentration of 1 mg/mL, ready for conjugation.

Matched antibody pairs are designed for use in a variety of assays and platforms that require matched antibody pairs.

Antibody use should be optimized for each application and assay.

Storage

Storage:
Store at -80°C.
Storage buffer:
PBS only

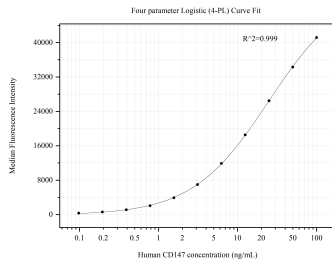
For technical support and original validation data for this product please contact:

T: 1 (888) 4PTGLAB (1-888-478-4522) (toll free in USA), or 1(312) 455-8498 (outside USA)

E: proteintech@ptglab.com
W: ptglab.com

This product is exclusively available under Proteintech Group brand and is not available to purchase from any other manufacturer.

Selected Validation Data



Cytometric bead array standard curve of MP50494-4, CD147 Monoclonal Matched Antibody Pair, PBS Only. Capture antibody: 60401-3-PBS. Detection antibody: 60401-1-PBS. Standard:Eg0436. Range: 0.098-100 ng/mL.