

For Research Use Only

CYP24A1 Monoclonal Matched Antibody Pair, PBS Only



Catalog Number:MP50481-1

Capture Antibody Information

Catalog Number:
67887-2-PBS
Host:
Mouse
Isotype:
IgG1
Purification Method:
Protein G Magarose purification

Clone ID:
2C6E4
Reactivity:
human
Immunogen Catalog Number:
Ag17089

Conjugate:
Unconjugated
Full name:
cytochrome P450, family 24, subfamily A, polypeptide 1
Gene ID:
1591

Detection Antibody Information

Catalog Number:
67887-3-PBS
Host:
Mouse
Isotype:
IgG1
Purification Method:
Protein G Magarose purification

Clone ID:
2C1H7
Reactivity:
human
GenBank:
BC109083
Immunogen Catalog Number:
Ag17089

Conjugate:
Unconjugated
Full name:
cytochrome P450, family 24, subfamily A, polypeptide 1
Gene ID:
1591

Applications

Tested Applications:
Cytometric bead array

Range:
1.563-100 ng/mL (Cytometric Bead Array)

Recommended Dilutions:
It is recommended that this reagent should be titrated in each testing system to obtain optimal results.

Product Information

MP50481-1 targets CYP24A1 in immunoassays as a matched antibody pair. Validated in Cytometric bead array.
Capture antibody: CYP24A1 Monoclonal antibody, PBS Only (Capture) 67887-2-PBS (2C6E4). 100 µg. Concentration 1 mg/ml.
Detection antibody: CYP24A1 Monoclonal antibody, PBS Only (Capture/Detector) 67887-3-PBS (2C1H7). 100 µg. Concentration 1 mg/ml.
Alternative CYP24A1 matched antibody pairs: MP50481-2, MP50481-3
Unconjugated mouse monoclonal antibody pair in PBS only storage buffer at a concentration of 1 mg/mL, ready for conjugation.
Matched antibody pairs are designed for use in a variety of assays and platforms that require matched antibody pairs.
Antibody use should be optimized for each application and assay.

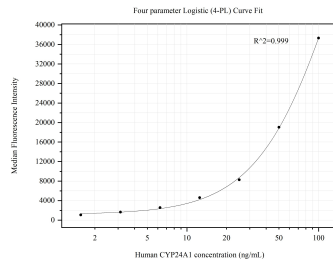
Storage

Storage:
Store at -80°C.
Storage buffer:
PBS only

For technical support and original validation data for this product please contact:
T: 1 (888) 4PTGLAB (1-888-478-4522) (toll free in USA), or 1(312) 455-8498 (outside USA) E: proteintech@ptglab.com W: ptglab.com

This product is exclusively available under Proteintech Group brand and is not available to purchase from any other manufacturer.

Selected Validation Data



Cytometric bead array standard curve of MP50481-1, CYP24A1 Monoclonal Matched Antibody Pair, PBS Only. Capture antibody: 67887-2-PBS. Detection antibody: 67887-3-PBS. Standard: Ag17089. Range: 1.563-100 ng/mL.