

For Research Use Only

CD133 Monoclonal Matched Antibody Pair, PBS Only



Catalog Number:MP50457-1

Capture Antibody Information

Catalog Number:

66666-2-PBS

Host:

Mouse

Isotype:

IgG1

Purification Method:

Protein G purification

Clone ID:

3A6B8

Reactivity:

human

Immunogen Catalog Number:

Ag13327

Conjugate:

Unconjugated

Full name:

prominin 1

Gene ID:

8842

Detection Antibody Information

Catalog Number:

66666-3-PBS

Host:

Mouse

Isotype:

IgG1

Purification Method:

Protein G Magarose purification

Clone ID:

2A10D5

Reactivity:

human

GenBank:

BC012089

Immunogen Catalog Number:

Ag13327

Conjugate:

Unconjugated

Full name:

prominin 1

Gene ID:

8842

Applications

Tested Applications:

Cytometric bead array

Range:

1.563-100 ng/mL (Cytometric Bead Array)

Recommended Dilutions:

It is recommended that this reagent should be titrated in each testing system to obtain optimal results.

Product Information

MP50457-1 targets CD133 in immunoassays as a matched antibody pair. Validated in Cytometric bead array.

Capture antibody: CD133 Monoclonal antibody, PBS Only (Capture) 66666-2-PBS (3A6B8). 100 µg. Concentration 1 mg/ml.

Detection antibody: CD133 Monoclonal antibody, PBS Only (Detector) 66666-3-PBS (2A10D5). 100 µg. Concentration 1 mg/ml.

Alternative CD133 matched antibody pairs: MP50457-2, MP50457-3

Unconjugated mouse monoclonal antibody pair in PBS only storage buffer at a concentration of 1 mg/mL, ready for conjugation.

Matched antibody pairs are designed for use in a variety of assays and platforms that require matched antibody pairs.

Antibody use should be optimized for each application and assay.

Storage

Storage:

Store at -80°C.

Storage buffer:

PBS only

For technical support and original validation data for this product please contact:

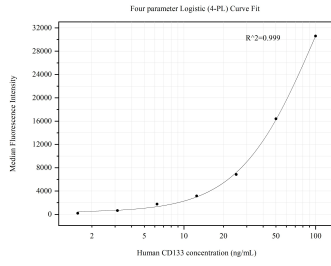
T: 1 (888) 4PTGLAB (1-888-478-4522) (toll free in USA), or 1(312) 455-8498 (outside USA)

E: proteintech@ptglab.com

W: ptglab.com

This product is exclusively available under Proteintech Group brand and is not available to purchase from any other manufacturer.

Selected Validation Data



Cytometric bead array standard curve of MP50457-1, CD133 Monoclonal Matched Antibody Pair, PBS Only. Capture antibody: 66666-2-PBS. Detection antibody: 66666-3-PBS. Standard: Ag13327. Range: 1.563-100 ng/mL.