

For Research Use Only

# LAPTM4B Monoclonal Matched Antibody Pair, PBS Only



Catalog Number:MP50452-1

## Capture Antibody Information

**Catalog Number:**  
68981-1-PBS

**Host:**  
Mouse

**Isotype:**  
IgG2a

**Purification Method:**  
Protein A Magarose purification

**Clone ID:**  
3B6E2

**Reactivity:**  
human

**Immunogen Catalog Number:**  
Ag29148

**Conjugate:**  
Unconjugated

**Full name:**  
lysosomal protein transmembrane 4 beta

**Gene ID:**  
55353

## Detection Antibody Information

**Catalog Number:**  
68981-2-PBS

**Host:**  
Mouse

**Isotype:**  
IgG2a

**Purification Method:**  
Protein A Magarose purification

**Clone ID:**  
2F4C2

**Reactivity:**  
human

**GenBank:**  
BC014129

**Immunogen Catalog Number:**  
Ag29148

**Conjugate:**  
Unconjugated

**Full name:**  
lysosomal protein transmembrane 4 beta

**Gene ID:**  
55353

## Applications

**Tested Applications:**  
Cytometric bead array

**Range:**  
1.563-50 ng/mL (Cytometric Bead Array)

**Recommended Dilutions:**  
It is recommended that this reagent should be titrated in each testing system to obtain optimal results.

## Product Information

MP50452-1 targets LAPTM4B in immunoassays as a matched antibody pair. Validated in Cytometric bead array.

Capture antibody: LAPTM4B Monoclonal antibody, PBS Only (Capture) 68981-1-PBS (3B6E2). 100 µg. Concentration 1 mg/ml.

Detection antibody: LAPTM4B Monoclonal antibody, PBS Only (Detector) 68981-2-PBS (2F4C2). 100 µg. Concentration 1 mg/ml.

Unconjugated mouse monoclonal antibody pair in PBS only storage buffer at a concentration of 1 mg/mL, ready for conjugation.

Matched antibody pairs are designed for use in a variety of assays and platforms that require matched antibody pairs.

Antibody use should be optimized for each application and assay.

## Storage

**Storage:**  
Store at -80°C.

**Storage buffer:**  
PBS only

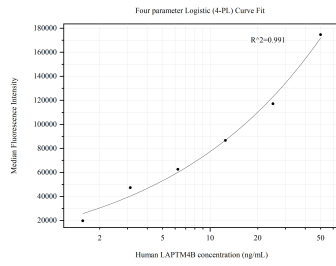
For technical support and original validation data for this product please contact:

T: 1 (888) 4PTGLAB (1-888-478-4522) (toll free in USA), or 1(312) 455-8498 (outside USA)

E: [proteintech@ptglab.com](mailto:proteintech@ptglab.com)  
W: [ptglab.com](http://ptglab.com)

**This product is exclusively available under Proteintech Group brand and is not available to purchase from any other manufacturer.**

## Selected Validation Data



Cytometric bead array standard curve of MP50452-1, LAPTM4B Monoclonal Matched Antibody Pair, PBS Only. Capture antibody: 68981-1-PBS. Detection antibody: 68981-2-PBS. Standard: Ag29148. Range: 1.563-50 ng/mL