

For Research Use Only

# IMMP2L Monoclonal Matched Antibody Pair, PBS Only



Catalog Number:MP50430-2

## Capture Antibody Information

Catalog Number:

68972-2-PBS

Host:

Mouse

Isotype:

IgG3

Purification Method:

Protein A Magarose purification

Clone ID:

1F4B4

Reactivity:

human

Immunogen Catalog Number:

Ag8752

Conjugate:

Unconjugated

Full name:

IMP2 inner mitochondrial membrane peptidase-like (*S. cerevisiae*)

Gene ID:

83943

## Detection Antibody Information

Catalog Number:

68972-3-PBS

Host:

Mouse

Isotype:

IgG1

Purification Method:

Protein G Magarose purification

Clone ID:

1H7D6

Reactivity:

human

GenBank:

BC008497

Immunogen Catalog Number:

Ag8752

Conjugate:

Unconjugated

Full name:

IMP2 inner mitochondrial membrane peptidase-like (*S. cerevisiae*)

Gene ID:

83943

## Applications

Tested Applications:

Cytometric bead array

Range:

0.098-50 ng/mL (Cytometric Bead Array)

Recommended Dilutions:

It is recommended that this reagent should be titrated in each testing system to obtain optimal results.

## Product Information

MP50430-2 targets IMMP2L in immunoassays as a matched antibody pair. Validated in Cytometric bead array.

Capture antibody: IMMP2L Monoclonal antibody, PBS Only (Capture/Detector) 68972-2-PBS (1F4B4). 100 µg. Concentration 1 mg/ml.

Detection antibody: IMMP2L Monoclonal antibody, PBS Only (Detector) 68972-3-PBS (1H7D6). 100 µg. Concentration 1 mg/ml.

Alternative IMMP2L matched antibody pairs: MP50430-1

Unconjugated mouse monoclonal antibody pair in PBS only storage buffer at a concentration of 1 mg/mL, ready for conjugation.

Matched antibody pairs are designed for use in a variety of assays and platforms that require matched antibody pairs.

Antibody use should be optimized for each application and assay.

## Storage

Storage:

Store at -80°C.

Storage buffer:

PBS only

For technical support and original validation data for this product please contact:

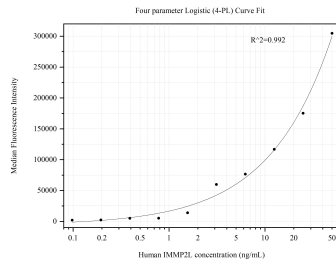
T: 1 (888) 4PTGLAB (1-888-478-4522) (toll free in USA), or 1(312) 455-8498 (outside USA)

E: [proteintech@ptglab.com](mailto:proteintech@ptglab.com)

W: [ptglab.com](http://ptglab.com)

This product is exclusively available under Proteintech Group brand and is not available to purchase from any other manufacturer.

## Selected Validation Data



Cytometric bead array standard curve of MP50430-2, IMMP2L Monoclonal Matched Antibody Pair, PBS Only. Capture antibody: 68972-2-PBS. Detection antibody: 68972-3-PBS. Standard: Ag8752. Range: 0.098-50 ng/mL