

For Research Use Only

# SLC25A37 Monoclonal Matched Antibody Pair, PBS Only



Catalog Number:MP50411-2

## Capture Antibody Information

Catalog Number:  
67593-4-PBS

Host:  
Mouse

Isotype:  
IgG1

Purification Method:  
Protein G Magarose purification

Clone ID:  
2A4G12

Reactivity:  
human

Immunogen Catalog Number:  
Ag26216

Conjugate:  
Unconjugated

Full name:  
solute carrier family 25, member 37

Gene ID:  
51312

## Detection Antibody Information

Catalog Number:  
67593-3-PBS

Host:  
Mouse

Isotype:  
IgG3

Purification Method:  
Protein A Magarose purification

Clone ID:  
1H2B2

Reactivity:  
human

GenBank:  
BC132799

Immunogen Catalog Number:  
Ag26216

Conjugate:  
Unconjugated

Full name:  
solute carrier family 25, member 37

Gene ID:  
51312

## Applications

Tested Applications:  
Cytometric bead array

Range:  
6.25-200 ng/mL (Cytometric Bead Array)

Recommended Dilutions:  
It is recommended that this reagent should be titrated in each testing system to obtain optimal results.

## Product Information

MP50411-2 targets SLC25A37 in immunoassays as a matched antibody pair. Validated in Cytometric bead array.

Capture antibody: SLC25A37 Monoclonal antibody, PBS Only (Capture) 67593-4-PBS (2A4G12). 100 µg. Concentration 1 mg/ml.

Detection antibody: SLC25A37 Monoclonal antibody, PBS Only (Detector) 67593-3-PBS (1H2B2). 100 µg. Concentration 1 mg/ml.

Alternative SLC25A37 matched antibody pairs: MP50411-1, MP50411-3, MP50411-4

Unconjugated mouse monoclonal antibody pair in PBS only storage buffer at a concentration of 1 mg/mL, ready for conjugation.

Matched antibody pairs are designed for use in a variety of assays and platforms that require matched antibody pairs.

Antibody use should be optimized for each application and assay.

## Storage

Storage:  
Store at -80°C.  
Storage buffer:  
PBS only

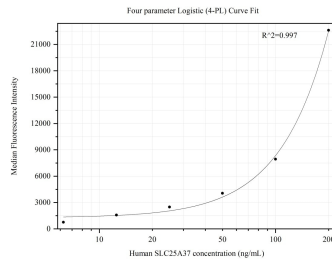
For technical support and original validation data for this product please contact:

T: 1 (888) 4PTGLAB (1-888-478-4522) (toll free in USA), or 1(312) 455-8498 (outside USA)

E: [proteintech@ptglab.com](mailto:proteintech@ptglab.com)  
W: [ptglab.com](http://ptglab.com)

**This product is exclusively available under Proteintech Group brand and is not available to purchase from any other manufacturer.**

## Selected Validation Data



Cytometric bead array standard curve of MP50411-2, SLC25A37 Monoclonal Matched Antibody Pair, PBS Only. Capture antibody: 67593-4-PBS. Detection antibody: 67593-3-PBS. Standard: Ag26216. Range: 6.25-200 ng/mL