

For Research Use Only

CD302 Monoclonal Matched Antibody Pair, PBS Only



Catalog Number:MP50401-1

Capture Antibody Information

Catalog Number:
66640-2-PBS

Host:
Mouse

Isotype:
IgG1

Purification Method:
Protein G Magarose purification

Clone ID:
1C2H12

Reactivity:
human

Immunogen Catalog Number:
Ag9873

Conjugate:
Unconjugated

Full name:
CD302 molecule

Gene ID:
9936

Detection Antibody Information

Catalog Number:
66640-3-PBS

Host:
Mouse

Isotype:
IgG1

Purification Method:
Protein G Magarose purification

Clone ID:
1G12D8

Reactivity:
human

GenBank:
BC020646

Immunogen Catalog Number:
Ag9873

Conjugate:
Unconjugated

Full name:
CD302 molecule

Gene ID:
9936

Applications

Tested Applications:
Cytometric bead array

Range:
3.125-100 ng/mL (Cytometric Bead Array)

Recommended Dilutions:
It is recommended that this reagent should be titrated in each testing system to obtain optimal results.

Product Information

MP50401-1 targets CD302 in immunoassays as a matched antibody pair. Validated in Cytometric bead array.

Capture antibody: CD302 Monoclonal antibody, PBS Only (Capture) 66640-2-PBS (1C2H12). 100 µg. Concentration 1 mg/ml.

Detection antibody: CD302 Monoclonal antibody, PBS Only (Capture/Detector) 66640-3-PBS (1G12D8). 100 µg. Concentration 1 mg/ml.

Alternative CD302 matched antibody pairs: MP50401-2, MP50401-3

Unconjugated mouse monoclonal antibody pair in PBS only storage buffer at a concentration of 1 mg/mL, ready for conjugation.

Matched antibody pairs are designed for use in a variety of assays and platforms that require matched antibody pairs.

Antibody use should be optimized for each application and assay.

Storage

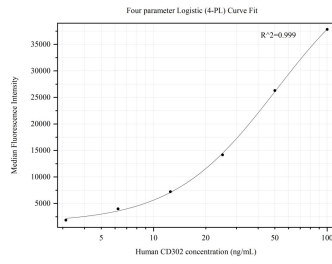
Storage:
Store at -80°C.

Storage buffer:
PBS only

For technical support and original validation data for this product please contact:
T: 1 (888) 4PTGLAB (1-888-478-4522) (toll free in USA), or 1(312) 455-8498 (outside USA) E: proteintech@ptglab.com
W: ptglab.com

This product is exclusively available under Proteintech Group brand and is not available to purchase from any other manufacturer.

Selected Validation Data



Cytometric bead array standard curve of MP50401-1, CD302 Monoclonal Matched Antibody Pair, PBS Only. Capture antibody: 66640-2-PBS. Detection antibody: 66640-3-PBS. Standard: Ag9873. Range: 3.125-100 ng/mL.