

For Research Use Only

CD28 Monoclonal Matched Antibody Pair, PBS Only



Catalog Number:MP50331-2

Capture Antibody Information

Catalog Number:
68913-3-PBS

Host:
Mouse

Isotype:
IgG1

Purification Method:
Protein G Magarose purification

Clone ID:
1E12C5

Reactivity:
human

Immunogen Catalog Number:
Ag24058

Conjugate:
Unconjugated

Full name:
CD28 molecule

Gene ID:
940

Detection Antibody Information

Catalog Number:
68913-4-PBS

Host:
Mouse

Isotype:
IgG1

Purification Method:
Protein G Magarose purification

Clone ID:
1B2A12

Reactivity:
human

GenBank:
BC093698

Immunogen Catalog Number:
Ag24058

Conjugate:
Unconjugated

Full name:
CD28 molecule

Gene ID:
940

Applications

Tested Applications:
Cytometric bead array

Range:
1.563-200 ng/mL (Cytometric Bead Array)

Recommended Dilutions:
It is recommended that this reagent should be titrated in each testing system to obtain optimal results.

Product Information

MP50331-2 targets CD28 in immunoassays as a matched antibody pair. Validated in Cytometric bead array.

Capture antibody: CD28 Monoclonal antibody, PBS Only (Capture) 68913-3-PBS (1E12C5). 100 µg. Concentration 1 mg/ml.

Detection antibody: CD28 Monoclonal antibody, PBS Only (Detector) 68913-4-PBS (1B2A12). 100 µg. Concentration 1 mg/ml.

Alternative CD28 matched antibody pairs: MP00136-1, MP00136-2, MP00136-3, MP00136-4, MP00136-5, MP50331-1

Unconjugated mouse monoclonal antibody pair in PBS only storage buffer at a concentration of 1 mg/mL, ready for conjugation.

Matched antibody pairs are designed for use in a variety of assays and platforms that require matched antibody pairs.

Antibody use should be optimized for each application and assay.

Storage

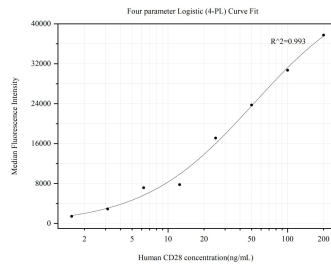
Storage:
Store at -80°C.

Storage buffer:
PBS only

For technical support and original validation data for this product please contact:
T: 1 (888) 4PTGLAB (1-888-478-4522) (toll free in USA), or 1(312) 455-8498 (outside USA) E: proteintech@ptglab.com W: ptglab.com

This product is exclusively available under Proteintech Group brand and is not available to purchase from any other manufacturer.

Selected Validation Data



Cytometric bead array standard curve of MP50331-2, CD28 Monoclonal Matched Antibody Pair, PBS Only. Capture antibody: 68913-3-PBS. Detection antibody: 68913-4-PBS. Standard:Ag24058. Range: 1.563-200 ng/mL.