

For Research Use Only

# CD163 Monoclonal Matched Antibody Pair, PBS Only



Catalog Number:MP50318-4

## Capture Antibody Information

**Catalog Number:**  
68218-4-PBS

**Host:**  
Mouse

**Isotype:**  
IgG1

**Purification Method:**  
Protein G Magarose purification

**Clone ID:**  
2A12E7

**Reactivity:**  
human

**Immunogen Catalog Number:**  
Ag26721

**Conjugate:**  
Unconjugated

**Full name:**  
CD163 molecule

**Gene ID:**  
9332

## Detection Antibody Information

**Catalog Number:**  
68218-5-PBS

**Host:**  
Mouse

**Isotype:**  
IgG1

**Purification Method:**  
Protein A purification

**Clone ID:**  
2B6A6

**Reactivity:**  
human

**GenBank:**  
BC051281

**Immunogen Catalog Number:**  
Ag26721

**Conjugate:**  
Unconjugated

**Full name:**  
CD163 molecule

**Gene ID:**  
9332

## Applications

**Tested Applications:**  
Cytometric bead array

**Range:**  
3.125-200 ng/mL (Cytometric Bead Array)

**Recommended Dilutions:**  
It is recommended that this reagent should be titrated in each testing system to obtain optimal results.

## Product Information

MP50318-4 targets CD163 in immunoassays as a matched antibody pair. Validated in Cytometric bead array.

Capture antibody: CD163 Monoclonal antibody, PBS Only (Capture) 68218-4-PBS (2A12E7). 100 µg. Concentration 1 mg/ml.

Detection antibody: CD163 Monoclonal antibody, PBS Only (Capture/Detector) 68218-5-PBS (2B6A6). 100 µg. Concentration 1 mg/ml.

Alternative CD163 matched antibody pairs: MP00326-1, MP00326-2, MP00326-3, MP50318-1, MP50318-2, MP50318-3

Unconjugated mouse monoclonal antibody pair in PBS only storage buffer at a concentration of 1 mg/mL, ready for conjugation.

Matched antibody pairs are designed for use in a variety of assays and platforms that require matched antibody pairs.

Antibody use should be optimized for each application and assay.

## Storage

**Storage:**  
Store at -80°C.

**Storage buffer:**  
PBS only

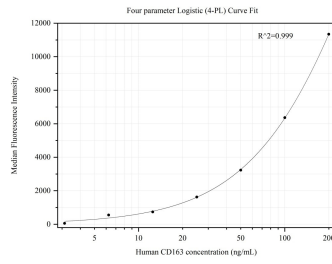
For technical support and original validation data for this product please contact:

T: 1 (888) 4PTGLAB (1-888-478-4522) (toll free in USA), or 1(312) 455-8498 (outside USA)

E: [proteintech@ptglab.com](mailto:proteintech@ptglab.com)  
W: [ptglab.com](http://ptglab.com)

**This product is exclusively available under Proteintech Group brand and is not available to purchase from any other manufacturer.**

## Selected Validation Data



Cytometric bead array standard curve of MP50318-4, CD163 Monoclonal Matched Antibody Pair, PBS Only. Capture antibody: 68218-4-PBS. Detection antibody: 68218-5-PBS. Standard:Ag26721. Range: 3.125-200 ng/mL.