

For Research Use Only

CD163 Monoclonal Matched Antibody Pair, PBS Only



Catalog Number:MP50318-1

Capture Antibody Information

Catalog Number:
68218-2-PBS

Host:
Mouse

Isotype:
IgG1

Purification Method:
Protein G purification

Clone ID:
3A5E8

Reactivity:
human

Immunogen Catalog Number:
Ag26721

Conjugate:
Unconjugated

Full name:
CD163 molecule

Gene ID:
9332

Detection Antibody Information

Catalog Number:
68218-3-PBS

Host:
Mouse

Isotype:
IgG1

Purification Method:
Protein G Magarose purification

Clone ID:
3E6H10

Reactivity:
human

GenBank:
BC051281

Immunogen Catalog Number:
Ag26721

Conjugate:
Unconjugated

Full name:
CD163 molecule

Gene ID:
9332

Applications

Tested Applications:
Cytometric bead array

Range:
12.5-200 ng/mL (Cytometric Bead Array)

Recommended Dilutions:
It is recommended that this reagent should be titrated in each testing system to obtain optimal results.

Product Information

MP50318-1 targets CD163 in immunoassays as a matched antibody pair. Validated in Cytometric bead array.

Capture antibody: CD163 Monoclonal antibody, PBS Only (Capture) 68218-2-PBS (3A5E8). 100 µg. Concentration 1 mg/mL.

Detection antibody: CD163 Monoclonal antibody, PBS Only (Detector) 68218-3-PBS (3E6H10). 100 µg. Concentration 1 mg/mL.

Alternative CD163 matched antibody pairs: MP00326-1, MP00326-2, MP00326-3, MP50318-2, MP50318-3, MP50318-4

Unconjugated mouse monoclonal antibody pair in PBS only storage buffer at a concentration of 1 mg/mL, ready for conjugation.

Matched antibody pairs are designed for use in a variety of assays and platforms that require matched antibody pairs.

Antibody use should be optimized for each application and assay.

Storage

Storage:
Store at -80°C.
Storage buffer:
PBS only

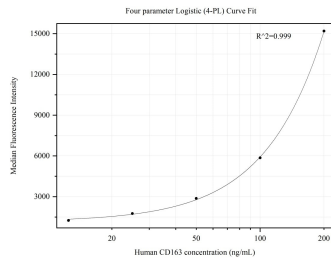
For technical support and original validation data for this product please contact:

T: 1 (888) 4PTGLAB (1-888-478-4522) (toll free in USA), or 1(312) 455-8498 (outside USA)

E: proteintech@ptglab.com
W: ptglab.com

This product is exclusively available under Proteintech Group brand and is not available to purchase from any other manufacturer.

Selected Validation Data



Cytometric bead array standard curve of MP50318-1, CD163 Monoclonal Matched Antibody Pair, PBS Only. Capture antibody: 68218-2-PBS. Detection antibody: 68218-3-PBS. Standard: Ag26721. Range: 12.5-200 ng/mL