

For Research Use Only

CD151 Monoclonal Matched Antibody Pair, PBS Only



Catalog Number:MP50304-2

Capture Antibody Information

Catalog Number:
66567-3-PBS

Host:
Mouse

Isotype:
IgG1

Purification Method:
Protein G Magarose purification

Clone ID:
2F10E1

Reactivity:
human

Immunogen Catalog Number:
Ag25985

Conjugate:
Unconjugated

Full name:
CD151 molecule (Raph blood group)

Gene ID:
977

Detection Antibody Information

Catalog Number:
66567-4-PBS

Host:
Mouse

Isotype:
IgG1

Purification Method:
Protein G purification

Clone ID:
1C2B1

Reactivity:
human

GenBank:
BC001374

Immunogen Catalog Number:
Ag25985

Conjugate:
Unconjugated

Full name:
CD151 molecule (Raph blood group)

Gene ID:
977

Applications

Tested Applications:
Cytometric bead array

Range:
6.25-200 ng/mL (Cytometric Bead Array)

Recommended Dilutions:
It is recommended that this reagent should be titrated in each testing system to obtain optimal results.

Product Information

MP50304-2 targets CD151 in immunoassays as a matched antibody pair. Validated in Cytometric bead array.

Capture antibody: CD151 Monoclonal antibody, PBS Only (Capture) 66567-3-PBS (2F10E1). 100 µg. Concentration 1 mg/mL.

Detection antibody: CD151 Monoclonal antibody, PBS Only (Detector) 66567-4-PBS (1C2B1). 100 µg. Concentration 1 mg/mL.

Alternative CD151 matched antibody pairs: MP50304-1

Unconjugated mouse monoclonal antibody pair in PBS only storage buffer at a concentration of 1 mg/mL, ready for conjugation.

Matched antibody pairs are designed for use in a variety of assays and platforms that require matched antibody pairs.

Antibody use should be optimized for each application and assay.

Storage

Storage:
Store at -80°C.
Storage buffer:
PBS only

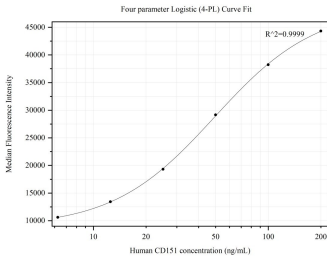
For technical support and original validation data for this product please contact:

T: 1 (888) 4PTGLAB (1-888-478-4522) (toll free in USA), or 1(312) 455-8498 (outside USA)

E: proteintech@ptglab.com
W: ptglab.com

This product is exclusively available under Proteintech Group brand and is not available to purchase from any other manufacturer.

Selected Validation Data



Cytometric bead array standard curve of MP50304-2, CD151 Monoclonal Matched Antibody Pair, PBS Only. Capture antibody: 66567-3-PBS. Detection antibody: 66567-4-PBS. Standard: Ag25985. Range: 6.25-200 ng/mL