

For Research Use Only

CD16 Monoclonal Matched Antibody Pair, PBS Only



Catalog Number:MP50298-2

Capture Antibody Information

Catalog Number:
66779-3-PBS
Host:
Mouse
Isotype:
IgG1
Purification Method:
Protein G Magarose purification

Clone ID:
1H4F9
Reactivity:
human
Immunogen Catalog Number:
Ag9787

Conjugate:
Unconjugated
Full name:
Fc fragment of IgG, low affinity IIIa, receptor (CD16a)
Gene ID:
2214

Detection Antibody Information

Catalog Number:
68897-1-PBS
Host:
Mouse
Isotype:
IgG1
Purification Method:
Protein G Magarose purification

Clone ID:
2D6C2
Reactivity:
human
GenBank:
BC017865

Conjugate:
Unconjugated
Full name:
Fc fragment of IgG, low affinity IIIa, receptor (CD16a)
Gene ID:
2214

Applications

Tested Applications:
Cytometric bead array

Range:
3.125-100 ng/mL (Cytometric Bead Array)

Recommended Dilutions:
It is recommended that this reagent should be titrated in each testing system to obtain optimal results.

Product Information

MP50298-2 targets CD16 in immunoassays as a matched antibody pair. Validated in Cytometric bead array.
Capture antibody: CD16 Monoclonal antibody, PBS Only (Capture) 66779-3-PBS (1H4F9). 100 µg. Concentration 1 mg/ml.
Detection antibody: CD16 Monoclonal antibody, PBS Only (Detector) 68897-1-PBS (2D6C2). 100 µg. Concentration 1 mg/ml.
Alternative CD16 matched antibody pairs: MP50298-1
Unconjugated mouse monoclonal antibody pair in PBS only storage buffer at a concentration of 1 mg/mL, ready for conjugation.
Matched antibody pairs are designed for use in a variety of assays and platforms that require matched antibody pairs.
Antibody use should be optimized for each application and assay.

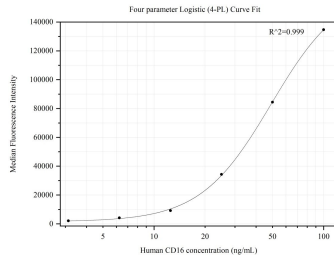
Storage

Storage:
Store at -80°C.
Storage buffer:
PBS only

For technical support and original validation data for this product please contact:
T: 1 (888) 4PTGLAB (1-888-478-4522) (toll free in USA), or 1(312) 455-8498 (outside USA) E: proteintech@ptglab.com
W: ptglab.com

This product is exclusively available under Proteintech Group brand and is not available to purchase from any other manufacturer.

Selected Validation Data



Cytometric bead array standard curve of MP50298-2, CD16 Monoclonal Matched Antibody Pair, PBS Only. Capture antibody: 66779-3-PBS. Detection antibody: 68897-1-PBS. Standard: Eg31662. Range: 3.125-100 ng/mL.