

For Research Use Only

CD45 Monoclonal Matched Antibody Pair, PBS Only



Catalog Number:MP50221-4

Capture Antibody Information

Catalog Number:
60287-1-PBS
Host:
Mouse
Isotype:
IgG2a
Purification Method:
Protein A purification

Clone ID:
4E9B2
Reactivity:
human, pig, mouse, rat
Immunogen Catalog Number:
Ag13712

Conjugate:
Unconjugated
Full name:
protein tyrosine phosphatase, receptor type, C
Gene ID:
5788

Detection Antibody Information

Catalog Number:
60287-5-PBS
Host:
Mouse
Isotype:
IgG1
Purification Method:
Protein G Magarose purification

Clone ID:
5F12G12
Reactivity:
Human
GenBank:
BC014239
Immunogen Catalog Number:
Ag13712

Conjugate:
Unconjugated
Full name:
protein tyrosine phosphatase, receptor type, C
Gene ID:
5788

Applications

Tested Applications:
Cytometric bead array

Range:
0.391-100 ng/mL (Cytometric Bead Array)

Recommended Dilutions:
It is recommended that this reagent should be titrated in each testing system to obtain optimal results.

Product Information

MP50221-4 targets CD45 in immunoassays as a matched antibody pair. Validated in Cytometric bead array.
Capture antibody: CD45 Monoclonal antibody, PBS Only (Capture) 60287-1-PBS (4E9B2). 100 µg. Concentration 1 mg/ml.
Detection antibody: CD45 Monoclonal antibody, PBS Only (Detector) 60287-5-PBS (5F12G12). 100 µg. Concentration 1 mg/ml.
Alternative CD45 matched antibody pairs: MP50221-1, MP50221-2, MP50221-3
Unconjugated mouse monoclonal antibody pair in PBS only storage buffer at a concentration of 1 mg/mL, ready for conjugation.
Matched antibody pairs are designed for use in a variety of assays and platforms that require matched antibody pairs.
Antibody use should be optimized for each application and assay.

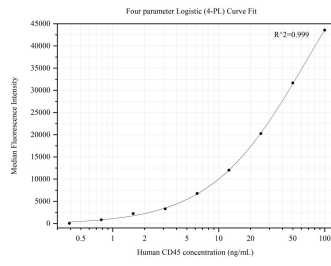
Storage

Storage:
Store at -80°C.
Storage buffer:
PBS only

For technical support and original validation data for this product please contact:
T: 1 (888) 4PTGLAB (1-888-478-4522) (toll free in USA), or 1(312) 455-8498 (outside USA) E: proteintech@ptglab.com
W: ptglab.com

This product is exclusively available under Proteintech Group brand and is not available to purchase from any other manufacturer.

Selected Validation Data



Cytometric bead array standard curve of MP50221-4, CD45 Monoclonal Matched Antibody Pair, PBS Only. Capture antibody: 60287-1-PBS. Detection antibody: 60287-5-PBS. Standard: Ag13712. Range: 0.391-100 ng/mL.