

For Research Use Only

# CD45 Monoclonal Matched Antibody Pair, PBS Only



Catalog Number:MP50221-3

## Capture Antibody Information

**Catalog Number:**  
60287-4-PBS  
**Host:**  
Mouse  
**Isotype:**  
IgG1  
**Purification Method:**  
Protein G Magarose purification

**Clone ID:**  
2H11F11  
**Reactivity:**  
Human  
**Immunogen Catalog Number:**  
Ag13712

**Conjugate:**  
Unconjugated  
**Full name:**  
protein tyrosine phosphatase, receptor type, C  
**Gene ID:**  
5788

## Detection Antibody Information

**Catalog Number:**  
60287-6-PBS  
**Host:**  
Mouse  
**Isotype:**  
IgG2b  
**Purification Method:**  
Protein A Magarose purification

**Clone ID:**  
5G12H6  
**Reactivity:**  
Human  
**GenBank:**  
BC014239  
**Immunogen Catalog Number:**  
Ag13712

**Conjugate:**  
Unconjugated  
**Full name:**  
protein tyrosine phosphatase, receptor type, C  
**Gene ID:**  
5788

## Applications

**Tested Applications:**  
Cytometric bead array

**Range:**  
0.391-100 ng/mL (Cytometric Bead Array)

**Recommended Dilutions:**  
It is recommended that this reagent should be titrated in each testing system to obtain optimal results.

## Product Information

MP50221-3 targets CD45 in immunoassays as a matched antibody pair. Validated in Cytometric bead array.  
Capture antibody: CD45 Monoclonal antibody, PBS Only (Capture) 60287-4-PBS (2H11F11). 100 µg. Concentration 1 mg/ml.  
Detection antibody: CD45 Monoclonal antibody, PBS Only (Detector) 60287-6-PBS (5G12H6). 100 µg. Concentration 1 mg/ml.  
Alternative CD45 matched antibody pairs: MP50221-1  
Unconjugated mouse monoclonal antibody pair in PBS only storage buffer at a concentration of 1 mg/mL, ready for conjugation.  
Matched antibody pairs are designed for use in a variety of assays and platforms that require matched antibody pairs.  
Antibody use should be optimized for each application and assay.

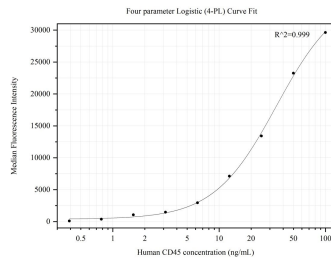
## Storage

**Storage:**  
Store at -80°C.  
**Storage buffer:**  
PBS only

For technical support and original validation data for this product please contact:  
T: 1 (888) 4PTGLAB (1-888-478-4522) (toll free in USA), or 1(312) 455-8498 (outside USA) E: proteintech@ptglab.com W: ptglab.com

This product is exclusively available under Proteintech Group brand and is not available to purchase from any other manufacturer.

## Selected Validation Data



Cytometric bead array standard curve of MP50221-3, CD45 Monoclonal Matched Antibody Pair, PBS Only. Capture antibody: 60287-4-PBS. Detection antibody: 60287-6-PBS. Standard:Ag13712. Range: 0.391-100 ng/mL.