

For Research Use Only

MPO Monoclonal Matched Antibody Pair, PBS Only



Catalog Number:MP50164-1

Capture Antibody Information

Catalog Number:
68797-1-PBS

Host:
Mouse

Isotype:
IgG1

Purification Method:
Protein G purification

Clone ID:
1G1H5

Reactivity:
Human

Conjugate:
Unconjugated

Full name:
myeloperoxidase

Gene ID:
4353

Detection Antibody Information

Catalog Number:
68797-2-PBS

Host:
Mouse

Isotype:
IgG1

Purification Method:
Protein G purification

Clone ID:
1D7B10

Reactivity:
Human

GenBank:
BC130476

Conjugate:
Unconjugated

Full name:
myeloperoxidase

Gene ID:
4353

Applications

Tested Applications:
Cytometric bead array, Sandwich ELISA

Range:
0.781-100 ng/mL (Cytometric Bead Array)

Recommended Dilutions:
It is recommended that this reagent should be titrated in each testing system to obtain optimal results.

Product Information

MP50164-1 targets MPO in immunoassays as a matched antibody pair. Validated in Cytometric bead array, Sandwich ELISA.

Capture antibody: MPO Monoclonal antibody, PBS Only (Capture) 68797-1-PBS (1G1H5). 100 µg. Concentration 1 mg/ml.

Detection antibody: MPO Monoclonal antibody, PBS Only (Detector) 68797-2-PBS (1D7B10). 100 µg. Concentration 1 mg/ml.

Alternative MPO matched antibody pairs: MP00321-1

Unconjugated mouse monoclonal antibody pair in PBS only (BSA and azide free) storage buffer at a concentration of 1 mg/mL, ready for conjugation.

Matched antibody pairs are designed for use in a variety of assays and platforms that require matched antibody pairs.

Antibody use should be optimized for each application and assay.

Storage

Storage:
Store at -80°C.
Storage buffer:
PBS only

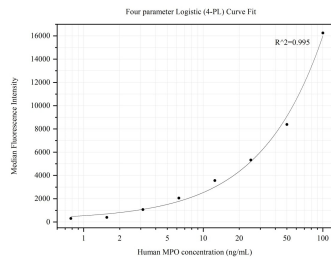
For technical support and original validation data for this product please contact:

T: 1 (888) 4PTGLAB (1-888-478-4522) (toll free in USA), or 1(312) 455-8498 (outside USA)

E: proteintech@ptglab.com
W: ptglab.com

This product is exclusively available under Proteintech Group brand and is not available to purchase from any other manufacturer.

Selected Validation Data



Cytometric bead array standard curve of MP50164-1, MPO Monoclonal Matched Antibody Pair, PBS Only. Capture antibody: 68797-1-PBS. Detection antibody: 68797-2-PBS. Standard:Eg0511. Range: 0.781-100 ng/mL.