

For Research Use Only

Ezrin Monoclonal Matched Antibody Pair, PBS Only



Catalog Number:MP50155-1

Capture Antibody Information

Catalog Number:
68789-1-PBS
Host:
Mouse
Isotype:
IgG1
Purification Method:
Protein G Magarose purification

Clone ID:
1C11A7
Reactivity:
human

Conjugate:
Unconjugated
Full name:
ezrin
Gene ID:
7430

Detection Antibody Information

Catalog Number:
68789-2-PBS
Host:
Mouse
Isotype:
IgG1
Purification Method:
Protein G Magarose purification

Clone ID:
1G12E9
Reactivity:
human
GenBank:
BC013903

Conjugate:
Unconjugated
Full name:
ezrin
Gene ID:
7430

Applications

Tested Applications:
Cytometric bead array

Range:
0.195-25 ng/mL (Cytometric Bead Array)

Recommended Dilutions:
It is recommended that this reagent should be titrated in each testing system to obtain optimal results.

Product Information

MP50155-1 targets Ezrin in immunoassays as a matched antibody pair. Validated in Cytometric bead array.

Capture antibody: Ezrin Monoclonal antibody, PBS Only (Capture) 68789-1-PBS (1C11A7). 100 µg. Concentration 1 mg/ml.

Detection antibody: Ezrin Monoclonal antibody, PBS Only (Detector) 68789-2-PBS (1G12E9). 100 µg. Concentration 1 mg/ml.

Unconjugated mouse monoclonal antibody pair in PBS only storage buffer at a concentration of 1 mg/mL, ready for conjugation.

Matched antibody pairs are designed for use in a variety of assays and platforms that require matched antibody pairs.

Antibody use should be optimized for each application and assay.

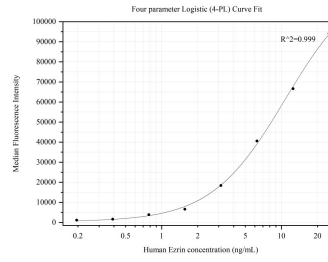
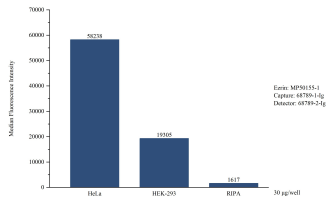
Storage

Storage:
Store at -80°C.
Storage buffer:
PBS only

For technical support and original validation data for this product please contact:
T: 1 (888) 4PTGLAB (1-888-478-4522) (toll free in USA), or 1(312) 455-8498 (outside USA) E: proteintech@ptglab.com W: ptglab.com

This product is exclusively available under Proteintech Group brand and is not available to purchase from any other manufacturer.

Selected Validation Data



Cytometric bead array in cell lysate using MP5015-1, Ezrin Monoclonal Matched Antibody Pair, PBS Only. Capture antibody: 68789-1-PBS. Detection antibody: 68789-2-PBS. Cell lysate: HeLa, HEK293. RIPA lysis buffer was served as blank control.

Cytometric bead array standard curve of MP5015-1, Ezrin Monoclonal Matched Antibody Pair, PBS Only. Capture antibody: 68789-1-PBS. Detection antibody: 68789-2-PBS. Standard: SY02111P. Range: 0.195-25 ng/mL.