

For Research Use Only

SLC7A11 Monoclonal Matched Antibody Pair, PBS Only



Catalog Number:MP50151-1

Capture Antibody Information

Catalog Number:
68785-1-PBS

Host:
Mouse

Isotype:
IgG1

Purification Method:
Protein G Magarose purification

Clone ID:
3D7H10

Reactivity:
Human

Immunogen Catalog Number:
Ag30611

Conjugate:
Unconjugated

Full name:
solute carrier family 7, (cationic amino acid transporter, y+ system) member 11

Gene ID:
23657

Detection Antibody Information

Catalog Number:
68785-2-PBS

Host:
Mouse

Isotype:
IgG1

Purification Method:
Protein G Magarose purification

Clone ID:
3D4E11

Reactivity:
Human

GenBank:
BC012087

Immunogen Catalog Number:
Ag30611

Conjugate:
Unconjugated

Full name:
solute carrier family 7, (cationic amino acid transporter, y+ system) member 11

Gene ID:
23657

Applications

Tested Applications:
Cytometric bead array, Sandwich ELISA

Range:
1.563-100 ng/mL (Cytometric Bead Array)

Recommended Dilutions:
It is recommended that this reagent should be titrated in each testing system to obtain optimal results.

Product Information

MP50151-1 targets SLC7A11 in immunoassays as a matched antibody pair. Validated in Cytometric bead array, Sandwich ELISA.

Capture antibody: SLC7A11 Monoclonal antibody, PBS Only (Capture) 68785-1-PBS (3D7H10). 100 µg. Concentration 1 mg/mL.

Detection antibody: SLC7A11 Monoclonal antibody, PBS Only (Detector) 68785-2-PBS (3D4E11). 100 µg. Concentration 1 mg/mL.

Unconjugated mouse monoclonal antibody pair in PBS only (BSA and azide free) storage buffer at a concentration of 1 mg/mL, ready for conjugation.

Matched antibody pairs are designed for use in a variety of assays and platforms that require matched antibody pairs.

Antibody use should be optimized for each application and assay.

Storage

Storage:
Store at -80°C.
Storage buffer:
PBS only

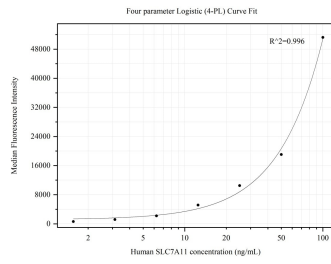
For technical support and original validation data for this product please contact:

T: 1 (888) 4PTGLAB (1-888-478-4522) (toll free in USA), or 1(312) 455-8498 (outside USA)

E: proteintech@ptglab.com
W: ptglab.com

This product is exclusively available under Proteintech Group brand and is not available to purchase from any other manufacturer.

Selected Validation Data



Cytometric bead array standard curve of MP50151-1, SLC7A11 Monoclonal Matched Antibody Pair, PBS Only. Capture antibody: 68785-1-PBS. Detection antibody: 68785-2-PBS. Standard:Ag30611. Range: 1.563-100 ng/mL.